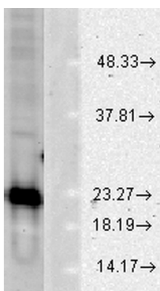


Anti-Superoxide Dismutase 1 Antibody (A305177)

Specifications:

Name:	Anti-Superoxide Dismutase 1 Antibody
Description:	Rabbit polyclonal antibody to Superoxide Dismutase 1.
Applications:	WB, IHC, IP, ELISA
Recommended Dilutions:	WB: 1:5,000, IHC: 1:100
Reactivity:	Human, Rat, Mouse, Bovine, Monkey, Invertebrate, Coral, Canine, Hamster, Porcine, Rabbit, Sheep, Xenopus, Mollusk, Fish
Immunogen:	Synthetic Human Cu/Zn SOD peptide.
Host:	Rabbit
Clonality:	Polyclonal
Isotype:	IgG
Conjugate:	Unconjugated
Purification:	Protein A purification.
Concentration:	1 mg/ml
Molecular Weight:	~23 kDa (human)
Product Form:	Liquid
Formulation:	Supplied in Phosphate Buffered Saline, pH 7.0, with 50% Glycerol and 0.09% Sodium Azide.
Storage:	Shipped at 4°C. Upon delivery aliquot and store at -20°C. Avoid freeze / thaw cycles.
Disclaimer:	This product is for research use only. It is not intended for diagnostic or therapeutic use.

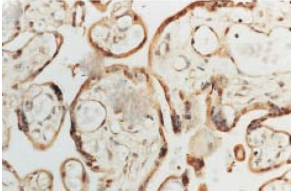
Images:



Western blot analysis of human Cell line lysates showing detection of SOD1 protein using Anti-Superoxide Dismutase 1 Antibody (A305177) at 1:1,000 for 2 hours at room temperature. Load: 15 µgprotein. Block: 1.5% BSA. The secondary antibody used was Donkey Anti-Rabbit IgG: HRP for 1 hour at room temperature.

Anti-Superoxide Dismutase 1 Antibody (A305177)

Images continued:



Immunohistochemistry analysis of human placenta. The Primary Antibody used was Anti-Superoxide Dismutase 1 Antibody (A305177) at 1:100.