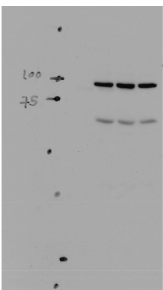


Anti-SCNN1A Antibody (A305178)

Specifications:

Name:	Anti-SCNN1A Antibody
Description:	Rabbit polyclonal antibody to SCNN1A.
Applications:	WB, IHC, ICC/IF, IP
Recommended Dilutions:	WB: 1:1,000, ICC/IF: 1:400, IHC: 1:25
Reactivity:	Human, Rat, Mouse, Xenopus
Immunogen:	Produced against a synthetic peptide mapping to the N-terminal of the alpha subunit (amino acids 46-68) of rat Alpha ENaC (antibody designation 3560-2)
Host:	Rabbit
Clonality:	Polyclonal
Isotype:	IgG
Conjugate:	Unconjugated
Purification:	Protein A purification.
Concentration:	1 mg/ml
Molecular Weight:	~85 kDa
Product Form:	Liquid
Formulation:	Supplied in Phosphate Buffered Saline with 50% Glycerol and 0.09% Sodium Azide.
Storage:	Shipped at 4°C. Upon delivery aliquot and store at -20°C. Avoid freeze / thaw cycles.
Disclaimer:	This product is for research use only. It is not intended for diagnostic or therapeutic use.

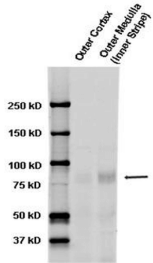
Images:



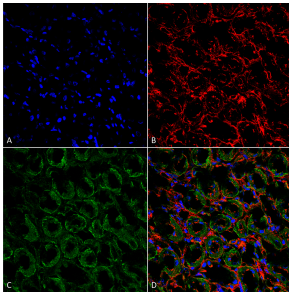
Western blot analysis of mouse kidney tissue lysates showing detection of ENaC protein using Anti-SCNN1A Antibody (A305178) at 1:1,000.

Anti-SCNN1A Antibody (A305178)

Images continued:



Western blot analysis of rat kidney tissue lysates showing detection of ENaC protein using Anti-SCNN1A Antibody (A305178) at 1:1,000.



Immunohistochemistry analysis of rat kidney tissue, fixed in formalin and paraffin-embedded. The Primary Antibody used was Anti-SCNN1A Antibody (A305178) at 1:25 for 1 hour at room temperature. The secondary antibody used was Goat Anti-Rabbit IgG: Alexa Fluor 488. Counterstain: Actin-binding Phalloidin-Alexa Fluor 633; DAPI (blue) nuclear stain. Magnification: 63X. (A) DAPI (blue) nuclear stain. (B) Phalloidin Alex Fluor 633 F-Actin stain. (C) ENaC Antibody (D) Composite