

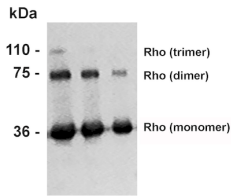
Anti-Rhodopsin Antibody [4D2] (A305179)

Specifications:

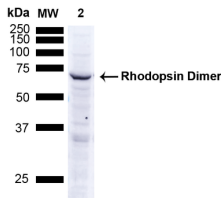
Name:	Anti-Rhodopsin Antibody [4D2]
Description:	Mouse monoclonal [4D2] antibody to Rhodopsin.
Specificity:	This antibody binds specifically to the N-terminus of Rhodopsin. It does not detect Rhodopsin in invertebrates.
Applications:	WB, IHC, ICC/IF, IP, ELISA
Recommended Dilutions:	WB: 1:1,000, IHC: 1,000
Reactivity:	Mammalian, Fish, Avian, Amphibians, Shark
Immunogen:	Bovine Rhodopsin.
Host:	Mouse
Clonality:	Monoclonal
Clone ID:	4D2
Isotype:	IgG1
Conjugate:	Unconjugated
Purification:	Protein G purification.
Concentration:	1 mg/ml
Molecular Weight:	~40 kDa
Product Form:	Liquid
Formulation:	Supplied in Phosphate Buffered Saline, pH 7.4, with 50% Glycerol and 0.09% Sodium Azide.
Storage:	Shipped at 4°C. Upon delivery aliquot and store at -20°C. Avoid freeze / thaw cycles.
Disclaimer:	This product is for research use only. It is not intended for diagnostic or therapeutic use.

Anti-Rhodopsin Antibody [4D2] (A305179)

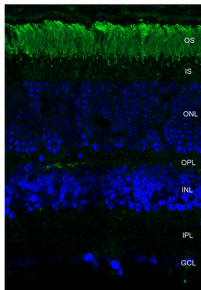
Images:



Western blot analysis of Bovine photoreceptor membranes showing detection of Rhodopsin protein using Anti-Rhodopsin Antibody [4D2] (A305179) at 1:1,000. Lane 1: MW ladder. Lane 2: 10 ug. Lane 3: 5 ug. Lane 4: 2.5 ug..



Western blot analysis of human A549 cells showing detection of ~38.9kDa Rhodopsin protein using Anti-Rhodopsin Antibody [4D2] (A305179) at 1:1,000 for 2. Lane 1: MW ladder. Lane 2: human A549 Cells 15 ug). Load: 15 ug. Block: 5% Skim Milk Powder in TBST. 5 hours at room temperature with shaking. The secondary antibody used was Goat anti-mouse IgG:HRP at 1:1,000 for 1 hour at room temperature with shaking. Color Development: Chemiluminescent for HRP (Moss) for 5 minutes in room temperature. Predicted/Observed Size: ~38.9kDa. Other Band(s): Band appears at ~75 kDa indicating detection of the Rhodopsin dimer.



Immunohistochemistry analysis of mouse retina. The Primary Antibody used was Anti-Rhodopsin Antibody [4D2] (A305179) at 1:1,000. The secondary antibody used was FITC Goat Anti-Mouse (green). Counterstain: DAPI (blue) nuclear stain. Localization: Staining of photoreceptor outer segment (OS). Other layers of the retina: IS inner segment; ONL outer nuclear layer; OPL outer plexiform layer; INL inner nuclear layer; IPL inner plexiform layer; GCL ganglion cell layer..