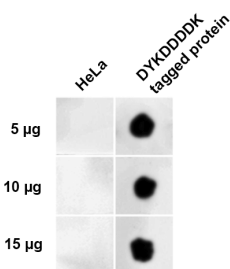


## Anti-DYKDDDDK Tag Antibody (A305217)

### Specifications:

Name:	Anti-DYKDDDDK Tag Antibody
Description:	Rabbit polyclonal antibody to DYKDDDDK Tag.
Specificity:	This antibody binds to DYKDDDDK (FLAG tag) conjugated proteins. Recognises the same epitope as Sigma's Anti-FLAG antibodies.
Applications:	WB
Recommended Dilutions:	WB: 1:1,000
Reactivity:	Species Independent
Immunogen:	Synthetic peptide corresponding to the DYKDDDDK Tag, conjugated to Keyhole Limpet Haemocyanin (KLH)
Host:	Rabbit
Clonality:	Polyclonal
Isotype:	IgG
Conjugate:	Unconjugated
Purification:	Peptide affinity purification.
Concentration:	1 mg/ml
Product Form:	Liquid
Formulation:	Supplied in Phosphate Buffered Saline, pH 7.4, with 50% Glycerol and 0.09% Sodium Azide.
Storage:	Shipped at 4°C. Upon delivery aliquot and store at -20°C. Avoid freeze / thaw cycles.
Disclaimer:	This product is for research use only. It is not intended for diagnostic or therapeutic use.

### Images:



Dot blot analysis of DYKDDDDK (FLAG) Positive Control Lysate using Anti-DYKDDDDK Tag Antibody (A305217) at 1:1,000 for 2 hours at room temperature. The secondary antibody used was Goat Anti-Rabbit HRP:IgG at 1:3000 for 1 hour at room temperature. The quantities of protein spotted on each panel are as shown.