

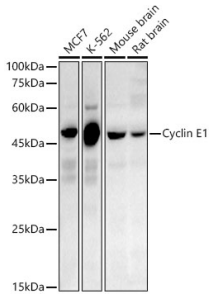
Anti-Cyclin E1 Antibody [ARC51384 + ARC51385] (A305274)

Specifications:

| | |
|------------------------|--|
| Name: | Anti-Cyclin E1 Antibody [ARC51384 + ARC51385] |
| Description: | Rabbit Oligoclonal [ARC51384 + ARC51385] antibody to Cyclin E1. |
| Applications: | WB |
| Recommended Dilutions: | WB: 1:2,000-1:10,000 |
| Reactivity: | Human, Mouse, Rat |
| Immunogen: | A synthetic peptide corresponding to a sequence within amino acids 300-400 of human Cyclin E1 Rabbit PolymAb® (NP_001229.1). |
| Sequence: | AASALYHFSSSELMQKVSGYQWCDIENCVKWMVPFAMVIRETGSSKCLKHFRGVADEDA HNIQTHRDSLDDLLDKARAKKAMLSEQNRASPLPSGLLTPPQSG |
| Host: | Rabbit |
| Clonality: | Oligoclonal |
| Clone ID: | ARC51384 + ARC51385 |
| Isotype: | IgG |
| Conjugate: | Unconjugated |
| Purification: | Affinity purification. |
| Molecular Weight: | 47 kDa |
| Product Form: | Liquid |
| Formulation: | Supplied in Phosphate Buffered Saline, pH 7.3, with 50% Glycerol, 0.05% BSA, and 0.05% Proclin 300. |
| Storage: | Shipped at 4°C. Upon delivery aliquot and store at -20°C. Avoid freeze / thaw cycles. |
| Disclaimer: | This product is for research use only. It is not intended for diagnostic or therapeutic use. |

Anti-Cyclin E1 Antibody [ARC51384 + ARC51385] (A305274)

Images:



Western blot analysis of various lysates, using Anti-Cyclin E1 Antibody [ARC51384 + ARC51385] (A305274) at 1:10,000 dilution. The secondary antibody was Goat Anti-Rabbit IgG H&L Antibody (HRP) at 1:10,000 dilution. Lysates/proteins were present at 25µg per lane. The blocking buffer used was 3% non-fat dry milk in TBST. Detection was with a ECL Basic Kit. Exposure time: 180s.