

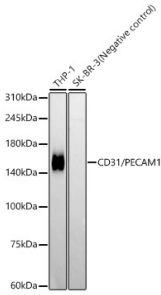
Anti-CD31 Antibody [ARC50362] (A305352)

Specifications:

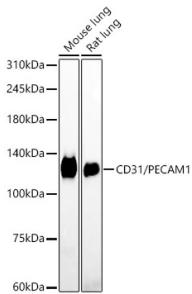
Name:	Anti-CD31 Antibody [ARC50362]
Description:	Rabbit monoclonal [ARC50362] antibody to CD31.
Applications:	WB, IHC, ICC/IF
Recommended Dilutions:	WB: 1:500-1:2,000, IHC: 1:500-1:1,000, ICC/IF: 1:100-1:500
Reactivity:	Human, Mouse, Rat
Immunogen:	Recombinant fusion protein containing a sequence corresponding to amino acids 630-738 of CD31/PECAM1 (NP_000433.4).
Sequence:	AKQMPVEMSRPAVPLLSNNEKMSDPNMEANSHYGHNDVVRNHAMKPINDNKEPLNSD VQYTEVQVSSAESHKDLGKKDTETVYSEVRKAVPDAVESRYSRTEGSLDGT
Host:	Rabbit
Clonality:	Monoclonal
Clone ID:	ARC50362
Isotype:	IgG
Conjugate:	Unconjugated
Purification:	Affinity purification.
Molecular Weight:	135 kDa
Product Form:	Liquid
Formulation:	Supplied in Phosphate Buffered Saline, pH 7.3, with 50% Glycerol, 0.05% BSA, and 0.05% Proclin 300.
Storage:	Shipped at 4°C. Upon delivery aliquot and store at -20°C. Avoid freeze / thaw cycles.
Disclaimer:	This product is for research use only. It is not intended for diagnostic or therapeutic use.

Anti-CD31 Antibody [ARC50362] (A305352)

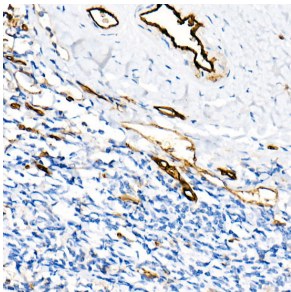
Images:



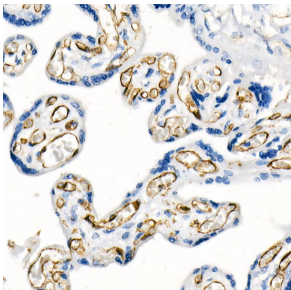
Western blot analysis of extracts of various cell lines, using Anti-CD31 Antibody [ARC50362] (A305352) at 1:1,000 dilution. The secondary antibody was Goat Anti-Rabbit IgG H&L Antibody (HRP) at 1:10,000 dilution. Lysates/proteins were present at 25µg per lane. The blocking buffer used was 3% non-fat dry milk in TBST. Detection was with a ECL Basic Kit. Exposure time: 3min.



Immunohistochemistry analysis of paraffin-embedded human tonsil using Anti-CD31 Antibody [ARC50362] (A305352) at a dilution of 1:600(40x lens). Perform high pressure antigen retrieval with 10 mM citrate buffer pH 6.0 before commencing with IHC staining protocol.



Immunohistochemistry analysis of paraffin-embedded human placenta using Anti-CD31 Antibody [ARC50362] (A305352) at a dilution of 1:600(40x lens). Perform high pressure antigen retrieval with 10 mM citrate buffer pH 6.0 before commencing with IHC staining protocol.



Immunofluorescence analysis of human placenta using Anti-CD31 Antibody [ARC50362] (A305352) at a dilution of 1:300 (40x lens). DAPI was used to stain the cell nuclei (blue).