

## Anti-Histone H3 (mono methyl Lys18) Antibody [ARC2621] (A305387)

### Specifications:

Name:	Anti-Histone H3 (mono methyl Lys18) Antibody [ARC2621]
Description:	Rabbit monoclonal antibody to Histone H3 (mono methyl Lys18).
Applications:	WB, IHC, ICC/IF, IP, ChIP, Dot Blot
Recommended Dilutions:	DB: 1:500-1:1,000, WB: 1:500-1:1,000, IHC: 1:50-1:200, IP: 1:500-1:1,000, ICC/IF: 1:50-1:200, ChIP: 1:500-1:1,000, CUT&Tag: 16 cells/1µg
Reactivity:	Human, Mouse, Rat
Immunogen:	A synthetic monomethylated peptide around K18 of human histone H3 (P68431).
Sequence:	APRKQ
Host:	Rabbit
Clonality:	Monoclonal
Clone ID:	ARC2621
Isotype:	IgG
Conjugate:	Unconjugated
Purification:	Affinity purification.
Molecular Weight:	17 kDa
Product Form:	Liquid
Formulation:	Supplied in Phosphate Buffered Saline, pH 7.3, with 50% Glycerol, 0.05% BSA, and 0.02% Sodium Azide.
Storage:	Shipped at 4°C. Upon delivery aliquot and store at -20°C. Avoid freeze / thaw cycles.
Disclaimer:	This product is for research use only. It is not intended for diagnostic or therapeutic use.

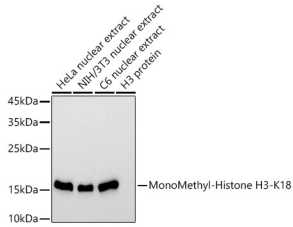
### Images:



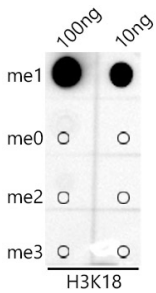
CUT&Tag was performed using the CUT&Tag Assay Kit (pAG-Tn5) for Illumina from 105 K562 cells with 1µg of Anti-Histone H3 (mono methyl Lys18) Antibody [ARC2621] (A305387), and Goat Anti-Rabbit IgG H&L Antibody. The CUT&Tag results indicate the enrichment pattern of H3K18me1 in representative gene loci (MYOD1), as shown in figure.

# Anti-Histone H3 (mono methyl Lys18) Antibody [ARC2621] (A305387)

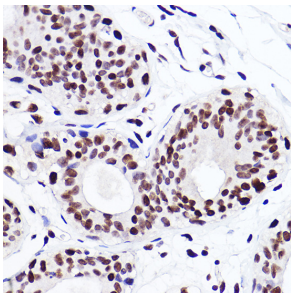
Images continued:



Western blot analysis of extracts of various cell lines, using Anti-Histone H3 (mono methyl Lys18) Antibody [ARC2621] (A305387) at 1:1,000 dilution. The secondary antibody was Goat Anti-Rabbit IgG H&L Antibody (HRP) at 1:10,000 dilution. Lysates/proteins were present at 25µg per lane. The blocking buffer used was 3% non-fat dry milk in TBST. Detection was with a ECL Basic Kit. Exposure time: 30s.



Dot blot analysis of a mixture of peptides using Anti-Histone H3 (mono methyl Lys18) Antibody [ARC2621] (A305387) at a 1:1,000 dilution.



Immunohistochemistry analysis of paraffin-embedded human breast cancer tissue using Anti-Histone H3 (mono methyl Lys18) Antibody [ARC2621] (A305387) at a dilution of 1:100 (40x lens). Perform high pressure antigen retrieval with 10 mM citrate buffer pH 6.0 before commencing with IHC staining protocol.