

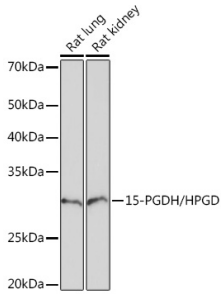
Anti-15-PGDH Antibody [ARC1280] (A305556)

Specifications:

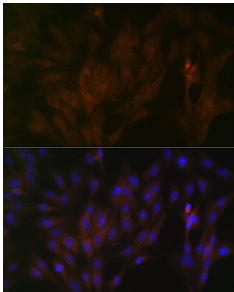
Name:	Anti-15-PGDH Antibody [ARC1280]
Description:	Rabbit monoclonal [ARC1280] antibody to 15-PGDH.
Applications:	WB, ICC/IF
Recommended Dilutions:	WB: 1:500-1:2,000, ICC/IF: 1:50-1:200
Reactivity:	Mouse, Rat
Immunogen:	Recombinant fusion protein containing a sequence corresponding to amino acids 50-151 of human 15-PGDH/HPGD (P15428).
Sequence:	DEQFEPQKTLFIQCDVADQQQLRDTFRKVVDFHGRDLILVNNAGVNNNEKNWEKTLQIN LVSVISGTYLGLDYMSKQNGGEGGIIINMSSLAGLMPVAQQPVY
Host:	Rabbit
Clonality:	Monoclonal
Clone ID:	ARC1280
Isotype:	IgG
Conjugate:	Unconjugated
Purification:	Affinity purification.
Molecular Weight:	29 kDa
Product Form:	Liquid
Formulation:	Supplied in Phosphate Buffered Saline, pH 7.3, with 50% Glycerol, 0.05% BSA, and 0.02% Sodium Azide.
Storage:	Shipped at 4°C. Upon delivery aliquot and store at -20°C. Avoid freeze / thaw cycles.
Disclaimer:	This product is for research use only. It is not intended for diagnostic or therapeutic use.

Anti-15-PGDH Antibody [ARC1280] (A305556)

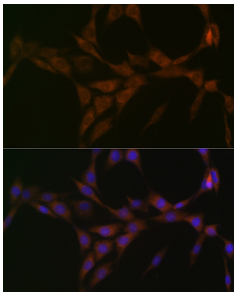
Images:



Western blot analysis of extracts of various cell lines, using Anti-15-PGDH Antibody [ARC1280] (A305556) at 1:1,000 dilution. The secondary antibody was Goat Anti-Rabbit IgG H&L Antibody (HRP) at 1:10,000 dilution. Lysates/proteins were present at 25 μ g per lane. The blocking buffer used was 3% non-fat dry milk in TBST. Detection was with a ECL Basic Kit. Exposure time: 90s.



Immunofluorescence analysis of C6 cells using Anti-15-PGDH Antibody [ARC1280] (A305556) at a dilution of 1:100 (40x lens). DAPI was used to stain the cell nuclei (blue).



Immunofluorescence analysis of NIH-3T3 cells using Anti-15-PGDH Antibody [ARC1280] (A305556) at a dilution of 1:100 (40x lens). DAPI was used to stain the cell nuclei (blue).