

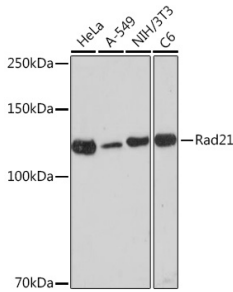
Anti-Rad21 Antibody [ARC2276] (A305731)

Specifications:

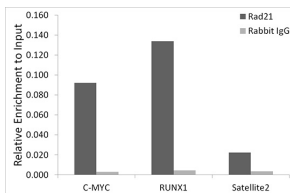
Name:	Anti-Rad21 Antibody [ARC2276]
Description:	Rabbit monoclonal [ARC2276] antibody to Rad21.
Applications:	WB, IP, ChIP
Recommended Dilutions:	WB: 1:500-1:2,000, ChIP: 1:50-1:200
Reactivity:	Human, Mouse, Rat
Immunogen:	A synthetic peptide corresponding to a sequence within amino acids 532-631 of human Rad21 (O60216).
Sequence:	EKEDDEEEEDASGGDQDQEERRWNKRTQQMLHGLQRALAKTGAESISLLELCRNTN RKQAAAKFYSLVLKKQQAIELTQEEPYSDIATPGPRFHII
Host:	Rabbit
Clonality:	Monoclonal
Clone ID:	ARC2276
Isotype:	IgG
Conjugate:	Unconjugated
Purification:	Affinity purification.
Molecular Weight:	130 kDa
Product Form:	Liquid
Formulation:	Supplied in Phosphate Buffered Saline, pH 7.3, with 50% Glycerol, 0.05% BSA, and 0.02% Sodium Azide.
Storage:	Shipped at 4°C. Upon delivery aliquot and store at -20°C. Avoid freeze / thaw cycles.
Disclaimer:	This product is for research use only. It is not intended for diagnostic or therapeutic use.

Anti-Rad21 Antibody [ARC2276] (A305731)

Images:



Western blot analysis of extracts of various cell lines, using Anti-Rad21 Antibody [ARC2276] (A305731) at 1:1,000 dilution. The secondary antibody was Goat Anti-Rabbit IgG H&L Antibody (HRP) at 1:10,000 dilution. Lysates/proteins were present at 25µg per lane. The blocking buffer used was 3% non-fat dry milk in TBST. Detection was with a ECL Enhanced Kit (RM00021). Exposure time: 180s.



Chromatin immunoprecipitation (ChIP) analysis of extracts of A-549 cells, using Anti-Rad21 Antibody [ARC2276] (A305731) and Rabbit IgG. The amount of immunoprecipitated DNA was checked by quantitative PCR. Histogram was constructed by the ratios of the immunoprecipitated DNA to the input.