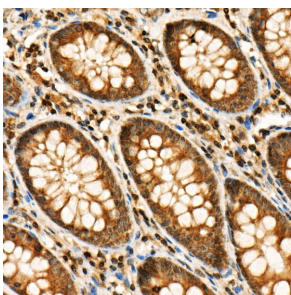


Anti-RIP3 (phospho Ser227) Antibody (A305777)

Specifications:

Name:	Anti-RIP3 (phospho Ser227) Antibody
Description:	Rabbit polyclonal antibody to RIP3 (phospho Ser227).
Applications:	IHC
Recommended Dilutions:	IHC: 1:50-1:200
Reactivity:	Human, Mouse, Rat
Immunogen:	A synthetic phosphorylated peptide around S227 of human RIP3 (NP_006862.2).
Sequence:	EPSLV
Host:	Rabbit
Clonality:	Polyclonal
Isotype:	IgG
Conjugate:	Unconjugated
Purification:	Affinity purification.
Product Form:	Liquid
Formulation:	Supplied in Phosphate Buffered Saline, pH 7.3, with 50% Glycerol and 0.05% Proclin 300.
Storage:	Shipped at 4°C. Upon delivery aliquot and store at -20°C. Avoid freeze / thaw cycles.
Disclaimer:	This product is for research use only. It is not intended for diagnostic or therapeutic use.

Images:



Immunohistochemistry analysis of paraffin-embedded human colon tissue using Anti-RIP3 (phospho Ser227) Antibody (A305777) at a dilution of 1:20 (40x lens). Perform high pressure antigen retrieval with 10 mM citrate buffer pH 6.0 before commencing with IHC staining protocol.