

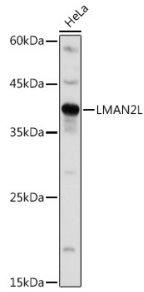
Anti-LMAN2L Antibody (A305786)

Specifications:

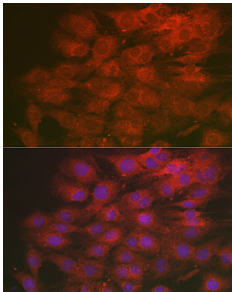
Name:	Anti-LMAN2L Antibody
Description:	Rabbit polyclonal antibody to LMAN2L.
Applications:	WB, ICC/IF
Recommended Dilutions:	WB: 1:500-1:1,000, ICC/IF: 1:50-1:200
Reactivity:	Human, Mouse, Rat
Immunogen:	Recombinant fusion protein containing a sequence corresponding to amino acids 189-348 of human LMAN2L (NP_110432.1).
Sequence:	ERDGRPTELGGCTAIVRNLYHYDTFLVIRYVKRHLTIMMDIDGKHEWRDCIEVPGVRLP RGYYFGTSSITGDLSDNHDVISLKLFFELTVERTPEEEKLHRDVFPLPSVDNMKLPEMTA PLPPLSGLALFLIVFFSLVFSVFAIVIGIILYNKWQEQRKRFY
Host:	Rabbit
Clonality:	Polyclonal
Isotype:	IgG
Conjugate:	Unconjugated
Purification:	Affinity purification.
Molecular Weight:	40 kDa
Product Form:	Liquid
Formulation:	Supplied in Phosphate Buffered Saline, pH 7.3, with 50% Glycerol and 0.05% Proclin 300.
Storage:	Shipped at 4°C. Upon delivery aliquot and store at -20°C. Avoid freeze / thaw cycles.
Disclaimer:	This product is for research use only. It is not intended for diagnostic or therapeutic use.

Anti-LMAN2L Antibody (A305786)

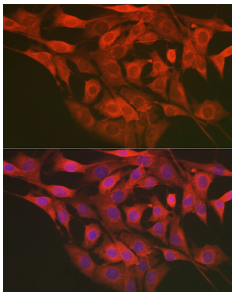
Images:



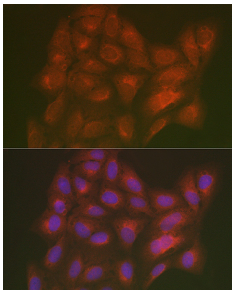
Western blot analysis of extracts of HeLa cells, using Anti-LMAN2L Antibody (A305786) at 1:1,000 dilution. The secondary antibody was Goat Anti-Rabbit IgG H&L Antibody (HRP) at 1:10,000 dilution. Lysates/proteins were present at 25 μ g per lane. The blocking buffer used was 3% non-fat dry milk in TBST. Detection was with a ECL Basic Kit. Exposure time: 3s.



Immunofluorescence analysis of C6 cells using Anti-LMAN2L Antibody (A305786) at a dilution of 1:200 (40x lens). DAPI was used to stain the cell nuclei (blue).



Immunofluorescence analysis of NIH/3T3 cells using Anti-LMAN2L Antibody (A305786) at a dilution of 1:200 (40x lens). DAPI was used to stain the cell nuclei (blue).



Immunofluorescence analysis of U2OS cells using Anti-LMAN2L Antibody (A305786) at a dilution of 1:200 (40x lens). DAPI was used to stain the cell nuclei (blue).