

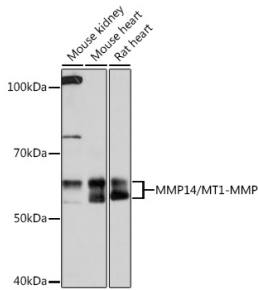
Anti-MMP14 Antibody [ARC0211] (A305940)

Specifications:

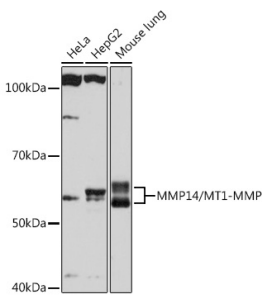
| | |
|------------------------|---|
| Name: | Anti-MMP14 Antibody [ARC0211] |
| Description: | Rabbit monoclonal [ARC0211] antibody to MMP14. |
| Applications: | WB |
| Recommended Dilutions: | WB: 1:500-1:2,000 |
| Reactivity: | Human, Mouse, Rat |
| Immunogen: | A synthetic peptide corresponding to a sequence within amino acids 100-200 of human MMP14/MMP14/MT1-MMP (P50281). |
| Sequence: | GAEIKANVRRKRYAIQGLKWQHNEITFCIQNYTPKVGGEYATYEAIRKAFRVWESATPL RFREVPYAYIREGHEKQADIMIFFAEGFHGDSTPFDGEGGFLA |
| Host: | Rabbit |
| Clonality: | Monoclonal |
| Clone ID: | ARC0211 |
| Isotype: | IgG |
| Conjugate: | Unconjugated |
| Purification: | Affinity purification. |
| Molecular Weight: | 52 kDa / 60 kDa |
| Product Form: | Liquid |
| Formulation: | Supplied in Phosphate Buffered Saline, pH 7.3, with 50% Glycerol, 0.05% BSA, and 0.02% Sodium Azide. |
| Storage: | Shipped at 4°C. Upon delivery aliquot and store at -20°C. Avoid freeze / thaw cycles. |
| Disclaimer: | This product is for research use only. It is not intended for diagnostic or therapeutic use. |

Anti-MMP14 Antibody [ARC0211] (A305940)

Images:



Western blot analysis of extracts of various cell lines, using Anti-MMP14 Antibody [ARC0211] (A305940) at 1:1,000 dilution. The secondary antibody was Goat Anti-Rabbit IgG H&L Antibody (HRP) at 1:10,000 dilution. Lysates/proteins were present at 25µg per lane. The blocking buffer used was 3% non-fat dry milk in TBST. Detection was with a ECL Basic Kit. Exposure time: 90s.



Western blot analysis of extracts of various cell lines, using Anti-MMP14 Antibody [ARC0211] (A305940) at 1:1,000 dilution. The secondary antibody was Goat Anti-Rabbit IgG H&L Antibody (HRP) at 1:10,000 dilution. Lysates/proteins were present at 25µg per lane. The blocking buffer used was 3% non-fat dry milk in TBST. Detection was with a ECL Basic Kit. Exposure time: 10s.