

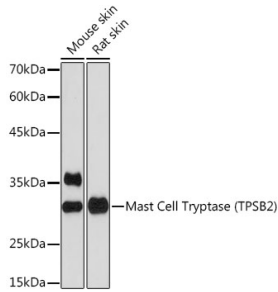
## Anti-TPSB2 Antibody [ARC2328] (A306038)

### Specifications:

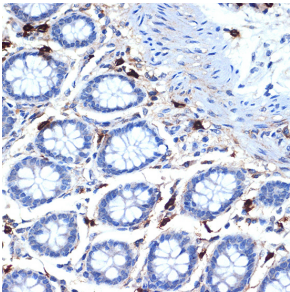
Name:	Anti-TPSB2 Antibody [ARC2328]
Description:	Rabbit monoclonal [ARC2328] antibody to TPSB2.
Applications:	WB, IHC
Recommended Dilutions:	WB: 1:500-1:2,000, IHC: 1:50-1:200
Reactivity:	Human, Mouse, Rat
Immunogen:	Recombinant fusion protein containing a sequence corresponding to amino acids 30-275 of human Mast Cell Tryptase (TPSB2) (TPSB2) (P20231).
Sequence:	GIVGGQEAPRSKWPWQVSLRVHGPYWMHFCGGSLIHPQWVLTAAHCVGPDVKDLAALR VQLREQHLYYQDQLLPVSRIIVHPQFYTAQIGADIALLEELPENVVSSHVHTVTLPPA SETFPPGMPCWVTGWGDVDNDERLPPPFPLKQVKVPIMENHICDAKYHLGAYTGDDVR IVRDDMLCAGNTRRDSCQGDSGGPLVCKVNGTWLQAGVVSWSGEGCAQPNRPGIYTRVT YYLDWIHHYVPPKP
Host:	Rabbit
Clonality:	Monoclonal
Clone ID:	ARC2328
Isotype:	IgG
Conjugate:	Unconjugated
Purification:	Affinity purification.
Molecular Weight:	31 kDa
Product Form:	Liquid
Formulation:	Supplied in Phosphate Buffered Saline, pH 7.3, with 50% Glycerol, 0.05% BSA, and 0.02% Sodium Azide.
Storage:	Shipped at 4°C. Upon delivery aliquot and store at -20°C. Avoid freeze / thaw cycles.
Disclaimer:	This product is for research use only. It is not intended for diagnostic or therapeutic use.

## Anti-TPSB2 Antibody [ARC2328] (A306038)

### Images:



Western blot analysis of extracts of various cell lines, using Anti-TPSB2 Antibody [ARC2328] (A306038) at 1:1,000 dilution. The secondary antibody was Goat Anti-Rabbit IgG H&L Antibody (HRP) at 1:10,000 dilution. Lysates/proteins were present at 25 $\mu$ g per lane. The blocking buffer used was 3% non-fat dry milk in TBST. Detection was with a ECL Basic Kit. Exposure time: 90s.



Immunohistochemistry analysis of paraffin-embedded human colon tissue using Anti-TPSB2 Antibody [ARC2328] (A306038) at a dilution of 1:100 (40x lens). Perform microwave antigen retrieval with 10 mM Tris/EDTA buffer pH 9.0 before commencing with IHC staining protocol.