

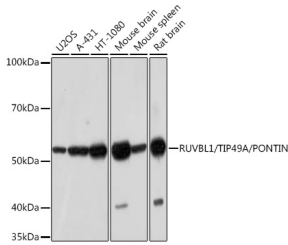
Anti-TIP49A Antibody [ARC1247] (A306321)

Specifications:

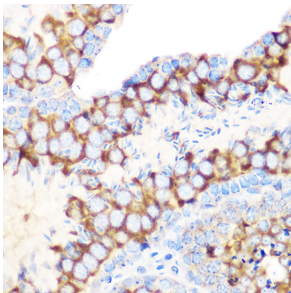
Name:	Anti-TIP49A Antibody [ARC1247]
Description:	Rabbit monoclonal [ARC1247] antibody to TIP49A.
Applications:	WB, IHC, IP, ChIP
Recommended Dilutions:	WB: 1:500-1:2,000, IHC: 1:50-1:200, ChIP: 1:50-1:200
Reactivity:	Human, Mouse, Rat
Immunogen:	A synthetic peptide corresponding to a sequence within amino acids 350-456 of human RUVBL1/TIP49A/PONTIN (Q9Y265).
Sequence:	IPLDLLDRVMIIRTMLYTPQEMKQIIKIRAQTEGINISEEALNHLGEIGTKTTLRYSV QLLTPANLLAKINGKDSIEKEHVVEEISELFYDAKSSAKILADQQDKYMK
Host:	Rabbit
Clonality:	Monoclonal
Clone ID:	ARC1247
Isotype:	IgG
Conjugate:	Unconjugated
Purification:	Affinity purification.
Molecular Weight:	51 kDa
Product Form:	Liquid
Formulation:	Supplied in Phosphate Buffered Saline, pH 7.3, with 50% Glycerol, 0.05% BSA, and 0.02% Sodium Azide.
Storage:	Shipped at 4°C. Upon delivery aliquot and store at -20°C. Avoid freeze / thaw cycles.
Disclaimer:	This product is for research use only. It is not intended for diagnostic or therapeutic use.

Anti-TIP49A Antibody [ARC1247] (A306321)

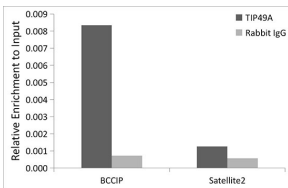
Images:



Western blot analysis of extracts of various cell lines, using Anti-TIP49A Antibody [ARC1247] (A306321) at 1:1,000 dilution. The secondary antibody was Goat Anti-Rabbit IgG H&L Antibody (HRP) at 1:10,000 dilution. Lysates/proteins were present at 25µg per lane. The blocking buffer used was 3% non-fat dry milk in TBST. Detection was with a ECL Basic Kit. Exposure time: 3min.



Immunohistochemistry analysis of paraffin-embedded mouse testis using Anti-TIP49A Antibody [ARC1247] (A306321) at a dilution of 1:100 (40x lens). Perform microwave antigen retrieval with 10 mM Tris/EDTA buffer pH 9.0 before commencing with IHC staining protocol.



Chromatin immunoprecipitation (ChIP) analysis of extracts of HepG2 cells, using Anti-TIP49A Antibody [ARC1247] (A306321) and Rabbit IgG. The amount of immunoprecipitated DNA was checked by quantitative PCR. Histogram was constructed by the ratios of the immunoprecipitated DNA to the input.