

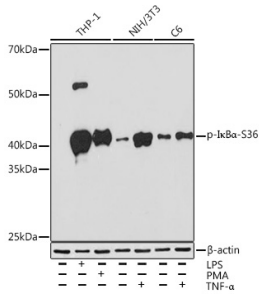
Anti-IKB alpha (phospho Ser36) Antibody [ARC1543] (A306544)

Specifications:

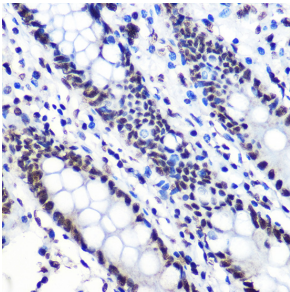
Name:	Anti-IKB alpha (phospho Ser36) Antibody [ARC1543]
Description:	Rabbit monoclonal [ARC1543] antibody to IKB alpha (phospho Ser36).
Applications:	WB, IHC
Recommended Dilutions:	WB: 1:500-1:2,000, IHC: 1:50-1:200
Reactivity:	Human, Mouse, Rat
Immunogen:	A synthetic phosphorylated peptide around S36 of human I κ B α (P25963).
Sequence:	LDSMK
Host:	Rabbit
Clonality:	Monoclonal
Clone ID:	ARC1543
Isotype:	IgG
Conjugate:	Unconjugated
Purification:	Affinity purification.
Molecular Weight:	39 kDa
Product Form:	Liquid
Formulation:	Supplied in Phosphate Buffered Saline, pH 7.3, with 50% Glycerol, 0.05% BSA, and 0.02% Sodium Azide.
Storage:	Shipped at 4°C. Upon delivery aliquot and store at -20°C. Avoid freeze / thaw cycles.
Disclaimer:	This product is for research use only. It is not intended for diagnostic or therapeutic use.

Anti-IKB alpha (phospho Ser36) Antibody [ARC1543] (A306544)

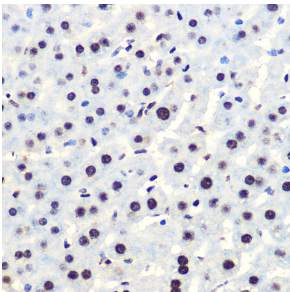
Images:



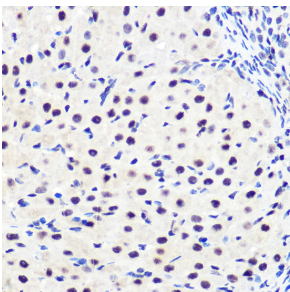
Western blot analysis of extracts of various cell lines, using Anti-IKB alpha (phospho Ser36) Antibody [ARC1543] (A306544) at 1:1,000 dilution. THP-1 cells were treated by PMA/TPA (80 nM) at 37°C for overnight or treated by LPS (1 µg/ml) at 37°C for 6 hours. Both NIH/3T3 cells and C6 cells were treated by TNF-alpha (20 ng/ml) at 37°C for 30 minutes. The secondary antibody was Goat Anti-Rabbit IgG H&L Antibody (HRP) at 1:10,000 dilution. Lysates/proteins were present at 25µg per lane. The blocking buffer used was 3% BSA. Detection was with a ECL Enhanced Kit (RM00021). Exposure time: 3min.



Immunohistochemistry analysis of paraffin-embedded human colon tissue using Anti-IKB alpha (phospho Ser36) Antibody [ARC1543] (A306544) at a dilution of 1:100 (40x lens). Perform microwave antigen retrieval with 10 mM PBS buffer pH 7.2 before commencing with IHC staining protocol.



Immunohistochemistry analysis of paraffin-embedded mouse liver using Anti-IKB alpha (phospho Ser36) Antibody [ARC1543] (A306544) at a dilution of 1:100 (40x lens). Perform microwave antigen retrieval with 10 mM PBS buffer pH 7.2 before commencing with IHC staining protocol.



Immunohistochemistry analysis of paraffin-embedded rat ovary using Anti-IKB alpha (phospho Ser36) Antibody [ARC1543] (A306544) at a dilution of 1:100 (40x lens). Perform microwave antigen retrieval with 10 mM PBS buffer pH 7.2 before commencing with IHC staining protocol.