

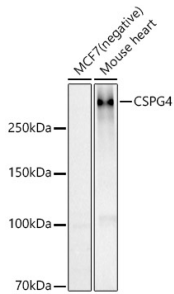
Anti-NG2 Antibody (A306575)

Specifications:

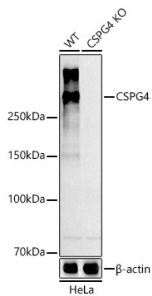
Name:	Anti-NG2 Antibody
Description:	Rabbit polyclonal antibody to NG2.
Applications:	WB
Recommended Dilutions:	WB: 1:500-1:1,000
Reactivity:	Human, Mouse
Immunogen:	Recombinant fusion protein containing a sequence corresponding to amino acids 1340-1563 of human NG2/CSPG4 (NP_001888.2).
Sequence:	LGAPLEGVLVELEVLPAAIPLAQNFVPEGGSLTAPLLRVSGPYFPTLLGLSLQV LEPPQHGALQKEDGPQARTLSAFSWRMVEEQLRIVYVHDGSETLTDSFVLMANASEMDR QSHPVAFVTVLPVNDQPPILTTNTGLQMWEGATAPIPAEALRSTDGDGSGSEDLVYTI EQPSNGRVVLRGAPGTEVRSFTQAQLDGGLVLFVSHRGTLDGGFRFRLSDG
Host:	Rabbit
Clonality:	Polyclonal
Isotype:	IgG
Conjugate:	Unconjugated
Purification:	Affinity purification.
Molecular Weight:	251 kDa
Product Form:	Liquid
Formulation:	Supplied in Phosphate Buffered Saline, pH 7.3, with 50% Glycerol and 0.05% Proclin 300.
Storage:	Shipped at 4°C. Upon delivery aliquot and store at -20°C. Avoid freeze / thaw cycles.
Disclaimer:	This product is for research use only. It is not intended for diagnostic or therapeutic use.

Anti-NG2 Antibody (A306575)

Images:



Western blot analysis of various lysates, using Anti-NG2 Antibody (A306575) at 1:600 dilution. The secondary antibody was Goat Anti-Rabbit IgG H&L Antibody (HRP) at 1:10,000 dilution. Lysates/proteins were present at 25 μ g per lane. The blocking buffer used was 3% non-fat dry milk in TBST. Detection was with a ECL Basic Kit. Exposure time: 30s.



Western blot analysis of extracts from wild type(WT) and NG2/CSPG4 Rabbit polyclonal antibody knockout (KO) HeLa cells, using Anti-NG2 Antibody (A306575) at 1:600 dilution. The secondary antibody was Goat Anti-Rabbit IgG H&L Antibody (HRP) at 1:10,000 dilution. Lysates/proteins were present at 25 μ g per lane. The blocking buffer used was 3% non-fat dry milk in TBST. Detection was with a ECL Basic Kit. Exposure time: 30s.