

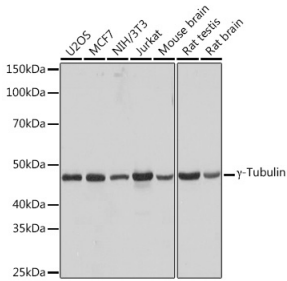
Anti-gamma Tubulin Antibody [ARC1684] (A306765)

Specifications:

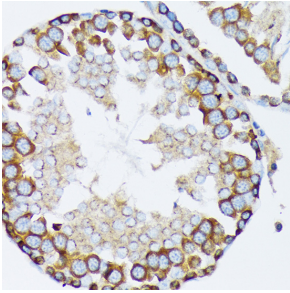
| | |
|------------------------|--|
| Name: | Anti-gamma Tubulin Antibody [ARC1684] |
| Description: | Rabbit monoclonal [ARC1684] antibody to gamma Tubulin. |
| Applications: | WB, IHC, ICC/IF |
| Recommended Dilutions: | WB: 1:500-1:2,000, IHC: 1:50-1:200, ICC/IF: 1:50-1:200 |
| Reactivity: | Human, Mouse, Rat |
| Immunogen: | Recombinant fusion protein containing a sequence corresponding to amino acids 231-451 of human γ -Tubulin (P23258). |
| Sequence: | LVSTIMSASTTTLRYPGYMNNDLIGLIASLIPTPRLHFLMTGYTPLTTDQSVASVRKT TVLDVMRRLQLPKNVMVSTGRDRQTNHCYIAILNIIQGEVDPTQVHKSLQRIRERKLA NFIPWGPASIQVALSRKSPYLPSAHRVSGLMANHTSISLFFERTCRQYDKLRKREAF LEQFRKEDMFKDNFDEMDTSREIVQQLIDEYHAATRPDYISWGTQEQ |
| Host: | Rabbit |
| Clonality: | Monoclonal |
| Clone ID: | ARC1684 |
| Isotype: | IgG |
| Conjugate: | Unconjugated |
| Purification: | Affinity purification. |
| Molecular Weight: | 49 kDa |
| Product Form: | Liquid |
| Formulation: | Supplied in Phosphate Buffered Saline, pH 7.3, with 50% Glycerol, 0.05% BSA, and 0.02% Sodium Azide. |
| Storage: | Shipped at 4°C. Upon delivery aliquot and store at -20°C. Avoid freeze / thaw cycles. |
| Disclaimer: | This product is for research use only. It is not intended for diagnostic or therapeutic use. |

Anti-gamma Tubulin Antibody [ARC1684] (A306765)

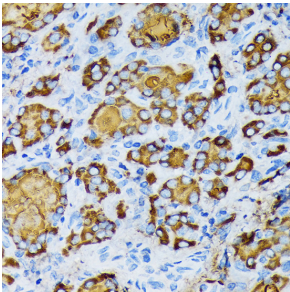
Images:



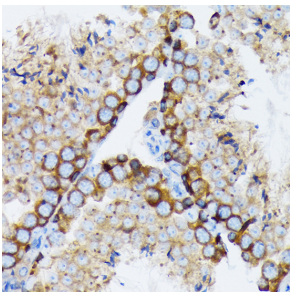
Western blot analysis of extracts of various cell lines, using Anti-gamma Tubulin Antibody [ARC1684] (A306765) at 1:1,000 dilution. The secondary antibody was Goat Anti-Rabbit IgG H&L Antibody (HRP) at 1:10,000 dilution. Lysates/proteins were present at 25 μ g per lane. The blocking buffer used was 3% non-fat dry milk in TBST. Detection was with a ECL Basic Kit. Exposure time: 3s.



Immunohistochemistry analysis of paraffin-embedded rat testis using Anti-gamma Tubulin Antibody [ARC1684] (A306765) at a dilution of 1:100 (40x lens). Perform microwave antigen retrieval with 10 mM Tris/EDTA buffer pH 9.0 before commencing with IHC staining protocol.



Immunohistochemistry analysis of paraffin-embedded human thyroid cancer using Anti-gamma Tubulin Antibody [ARC1684] (A306765) at a dilution of 1:100 (40x lens). Perform microwave antigen retrieval with 10 mM Tris/EDTA buffer pH 9.0 before commencing with IHC staining protocol.



Immunohistochemistry analysis of paraffin-embedded mouse testis using Anti-gamma Tubulin Antibody [ARC1684] (A306765) at a dilution of 1:100 (40x lens). Perform microwave antigen retrieval with 10 mM Tris/EDTA buffer pH 9.0 before commencing with IHC staining protocol.