

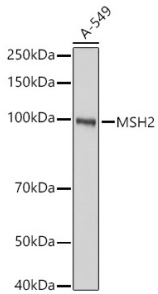
Anti-MSH2 Antibody (A307086)

Specifications:

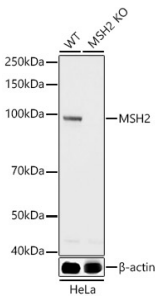
Name:	Anti-MSH2 Antibody
Description:	Rabbit polyclonal antibody to MSH2.
Applications:	WB, ICC/IF, IP
Recommended Dilutions:	WB: 1:500-1:1,000, ICC/IF: 1:50-1:200, IP: 1:1,000-1:5,000
Reactivity:	Human, Rat
Immunogen:	Recombinant fusion protein containing a sequence corresponding to amino acids 1-300 of human MSH2 (NP_000242.1).
Sequence:	MAVQPKETLQLESAAEVGFVRRFFQGMPEKPTTTVRLFDGRDFYTAHGEDALLAAREVF KTQGVIKYMGPAKAKNLQSVVLSKMNFEFVKDLLLVLRQYRVEVYKNRAGNKASKEND WYLAYKASPGNLSQFEDILFGNNDMSASIGVVGVKMSAVDGGQRQVGVGYVDSIQRKLG LCEFPDNDQFSNLEALLIQIGPKECVLPGGETAGDMGKLRQIIQRGGILITERKKADF STKDIYQDLNRLKGGKGEQMNSAVLPEMENQVAVSSLSAVIKFLELLSDDSNFGQFE LTTDFDSQYM
Host:	Rabbit
Clonality:	Polyclonal
Isotype:	IgG
Conjugate:	Unconjugated
Purification:	Affinity purification.
Molecular Weight:	105 kDa
Product Form:	Liquid
Formulation:	Supplied in Phosphate Buffered Saline, pH 7.3, with 50% Glycerol and 0.02% Sodium Azide.
Storage:	Shipped at 4°C. Upon delivery aliquot and store at -20°C. Avoid freeze / thaw cycles.
Disclaimer:	This product is for research use only. It is not intended for diagnostic or therapeutic use.

Anti-MSH2 Antibody (A307086)

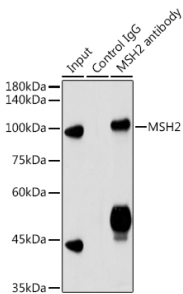
Images:



Western blot analysis of A-549, using Anti-MSH2 Antibody (A307086) at 1:1,000 dilution. The secondary antibody was Goat Anti-Rabbit IgG H&L Antibody (HRP) at 1:10,000 dilution. Lysates/proteins were present at 25µg per lane. The blocking buffer used was 3% non-fat dry milk in TBST. Detection was with a ECL Basic Kit. Exposure time: 1s.



Western blot analysis of extracts from wild type(WT) and MSH2 Rabbit polyclonal antibody knockout (KO) HeLa cells, using Anti-MSH2 Antibody (A307086) at 1:1,000 dilution. The secondary antibody was Goat Anti-Rabbit IgG H&L Antibody (HRP) at 1:10,000 dilution. Lysates/proteins were present at 25µg per lane. The blocking buffer used was 3% non-fat dry milk in TBST. Detection was with a ECL Basic Kit. Exposure time: 1s.



Immunoprecipitation analysis of 300µg extracts of HeLa cells using 3µg of Anti-MSH2 Antibody (A307086). This Western blot was performed on the immunoprecipitate using Anti-MSH2 Antibody (A307086) at a dilution of 1:3000.