

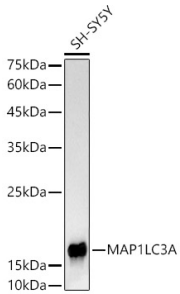
Anti-MAP1LC3A Antibody [ARC2636] (A307637)

Specifications:

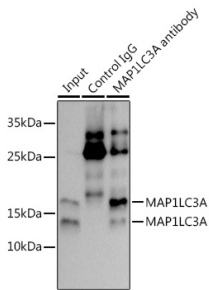
Name:	Anti-MAP1LC3A Antibody [ARC2636]
Description:	Rabbit monoclonal [ARC2636] antibody to MAP1LC3A.
Applications:	WB, IP
Recommended Dilutions:	WB: 1:500-1:1,000, IP: 1:500-1:1,000
Reactivity:	Human, Mouse, Rat
Immunogen:	A synthetic peptide corresponding to a sequence within amino acids 1-100 of human MAP1LC3A (Q9H492).
Sequence:	MPSDRPFKQRRSFADRCKEVQQIRDQHPKIPVIIERYKGEKQLPVLDTKFLVPDHV NMSELVKIIRRLQLNPTQAFFLLVNQHSMVSVSTPIADIYE
Host:	Rabbit
Clonality:	Monoclonal
Clone ID:	ARC2636
Isotype:	IgG
Conjugate:	Unconjugated
Purification:	Affinity purification.
Molecular Weight:	14 kDa
Product Form:	Liquid
Formulation:	Supplied in Phosphate Buffered Saline, pH 7.3, with 50% Glycerol, 0.05% BSA, and 0.02% Sodium Azide.
Storage:	Shipped at 4°C. Upon delivery aliquot and store at -20°C. Avoid freeze / thaw cycles.
Disclaimer:	This product is for research use only. It is not intended for diagnostic or therapeutic use.

Anti-MAP1LC3A Antibody [ARC2636] (A307637)

Images:



Western blot analysis of SH-SY5Y, using Anti-MAP1LC3A Antibody [ARC2636] (A307637) at 1:1,000 dilution. The secondary antibody was Goat Anti-Rabbit IgG H&L Antibody (HRP) at 1:10,000 dilution. Lysates/proteins were present at 25 μ g per lane. The blocking buffer used was 3% non-fat dry milk in TBST. Detection was with a ECL Basic Kit. Exposure time: 10s.



Immunoprecipitation analysis of 300 μ g extracts of NIH/3T3 cells using 3 μ g of Anti-MAP1LC3A Antibody [ARC2636] (A307637). This Western blot was performed on the immunoprecipitate using Anti-MAP1LC3A Antibody [ARC2636] (A307637) at a dilution of 1:1000. NIH/3T3 cells were treated by Chloroquine (50 μ M) at 37 $^{\circ}$ C for 20 hours.