

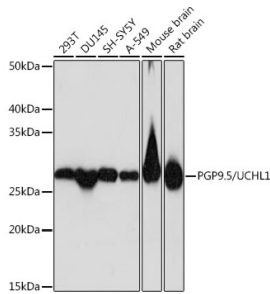
Anti-PGP9.5 Antibody [ARC50367] (A307670)

Specifications:

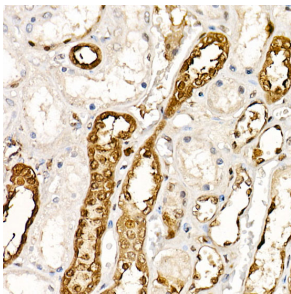
Name:	Anti-PGP9.5 Antibody [ARC50367]
Description:	Rabbit monoclonal [ARC50367] antibody to PGP9.5.
Applications:	WB, IHC, ICC/IF
Recommended Dilutions:	WB: 1:500-1:2,000, IHC: 1:50-1:200, ICC/IF: 1:50-1:200
Reactivity:	Human, Mouse, Rat
Immunogen:	Recombinant fusion protein containing a sequence corresponding to amino acids 1-220 of human PGP9.5/UCHL1 (NP_004172.2).
Sequence:	MQLKPMEINPEMLNKVLSRLGVAGQWRFVDVGLGEEESLGSPAPACALLLLFPLTAQ HENFRKKQIEELKGQEVSPKVYFMKQTIGNSCGTIGLIHAVANNQDKLGFEDGSVLKQ FLSETEKMSPEDRAKCFEKNEAIQAAHDAVAQEGQCRVDDKVNHFILFNNVDGHLYE LDGRMPFPVNHGASSEDLLKDKAAKVCREFTEREQGEVRFSAVALC
Host:	Rabbit
Clonality:	Monoclonal
Clone ID:	ARC50367
Isotype:	IgG
Conjugate:	Unconjugated
Purification:	Affinity purification.
Molecular Weight:	27 kDa
Product Form:	Liquid
Formulation:	Supplied in Phosphate Buffered Saline, pH 7.3, with 50% Glycerol, 0.05% BSA, and 0.05% Proclin 300.
Storage:	Shipped at 4°C. Upon delivery aliquot and store at -20°C. Avoid freeze / thaw cycles.
Disclaimer:	This product is for research use only. It is not intended for diagnostic or therapeutic use.

Anti-PGP9.5 Antibody [ARC50367] (A307670)

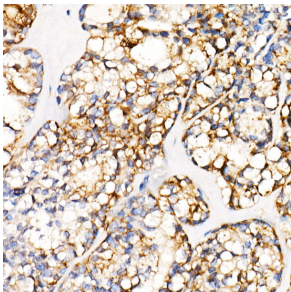
Images:



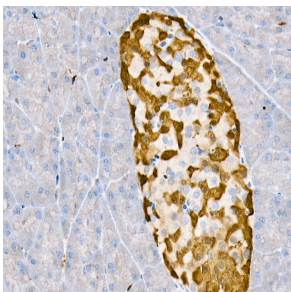
Western blot analysis of extracts of various cell lines, using Anti-PGP9.5 Antibody [ARC50367] (A307670) at 1:1,000 dilution. The secondary antibody was Goat Anti-Rabbit IgG H&L Antibody (HRP) at 1:10,000 dilution. Lysates/proteins were present at 25 μ g per lane. The blocking buffer used was 3% non-fat dry milk in TBST. Detection was with a ECL Basic Kit. Exposure time: 5s.



Immunohistochemistry analysis of paraffin-embedded human kidney using Anti-PGP9.5 Antibody [ARC50367] (A307670) at a dilution of 1:100 (40x lens). Perform high pressure antigen retrieval with 10 mM citrate buffer pH 6.0 before commencing with IHC staining protocol.



Immunohistochemistry analysis of paraffin-embedded human thyroid cancer using Anti-PGP9.5 Antibody [ARC50367] (A307670) at a dilution of 1:100 (40x lens). Perform high pressure antigen retrieval with 10 mM citrate buffer pH 6.0 before commencing with IHC staining protocol.



Immunohistochemistry analysis of paraffin-embedded mouse pancreas using Anti-PGP9.5 Antibody [ARC50367] (A307670) at a dilution of 1:100 (40x lens). Perform high pressure antigen retrieval with 10 mM citrate buffer pH 6.0 before commencing with IHC staining protocol.