

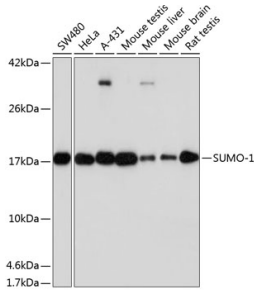
Anti-Sumo 1 Antibody [ARC0215] (A307733)

Specifications:

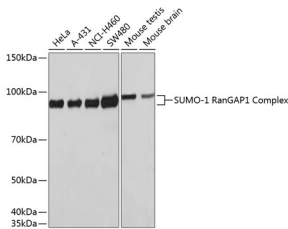
Name:	Anti-Sumo 1 Antibody [ARC0215]
Description:	Rabbit monoclonal [ARC0215] antibody to Sumo 1.
Applications:	WB, IHC, ICC/IF
Recommended Dilutions:	WB: 1:500-1:1,000, IHC: 1:50-1:200, ICC/IF: 1:50-1:200
Reactivity:	Human, Mouse, Rat
Immunogen:	A synthetic peptide corresponding to a sequence within amino acids 1-101 of human Sumo 1 (P63165).
Sequence:	MSDQEAKPSTEDLGDKKEGEYIKLVIGQDSSEIHFVKVMTTHLKKLKESYCQRQGVP MNSLRFLFEGQRIADNHTPKELGMEEEDVIEVYQEQTGGHSTV
Host:	Rabbit
Clonality:	Monoclonal
Clone ID:	ARC0215
Isotype:	IgG
Conjugate:	Unconjugated
Purification:	Affinity purification.
Molecular Weight:	17 kDa / 80 kDa
Product Form:	Liquid
Formulation:	Supplied in Phosphate Buffered Saline, pH 7.3, with 50% Glycerol, 0.05% BSA, and 0.02% Sodium Azide.
Storage:	Shipped at 4°C. Upon delivery aliquot and store at -20°C. Avoid freeze / thaw cycles.
Disclaimer:	This product is for research use only. It is not intended for diagnostic or therapeutic use.

Anti-Sumo 1 Antibody [ARC0215] (A307733)

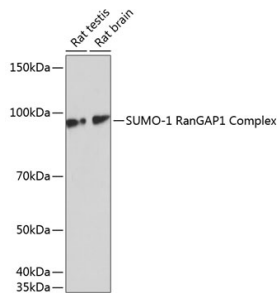
Images:



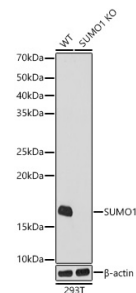
Western blot analysis of extracts of various cell lines, using Anti-Sumo 1 Antibody [ARC0215] (A307733) at 1:1,000 dilution. The secondary antibody was Goat Anti-Rabbit IgG H&L Antibody (HRP) at 1:10,000 dilution. Lysates/proteins were present at 25µg per lane. The blocking buffer used was 3% non-fat dry milk in TBST. Detection was with a ECL Basic Kit. Exposure time: 60s.



Western blot analysis of extracts of various cell lines, using Anti-Sumo 1 Antibody [ARC0215] (A307733) at 1:1,000 dilution. The secondary antibody was Goat Anti-Rabbit IgG H&L Antibody (HRP) at 1:10,000 dilution. Lysates/proteins were present at 25µg per lane. The blocking buffer used was 3% non-fat dry milk in TBST. Detection was with a ECL Basic Kit. Exposure time: 10s.



Western blot analysis of extracts of various cell lines, using Anti-Sumo 1 Antibody [ARC0215] (A307733) at 1:1,000 dilution. The secondary antibody was Goat Anti-Rabbit IgG H&L Antibody (HRP) at 1:10,000 dilution. Lysates/proteins were present at 25µg per lane. The blocking buffer used was 3% non-fat dry milk in TBST. Detection was with a ECL Basic Kit. Exposure time: 1min.



Western blot analysis of extracts from wild type(WT) and SUMO1 knockout (KO) 293T cells, using Anti-Sumo 1 Antibody [ARC0215] (A307733) at 1:1,000 dilution. The secondary antibody was Goat Anti-Rabbit IgG H&L Antibody (HRP) at 1:10,000 dilution. Lysates/proteins were present at 25µg per lane. The blocking buffer used was 3% non-fat dry milk in TBST. Detection was with a ECL Basic Kit. Exposure time: 10s.