

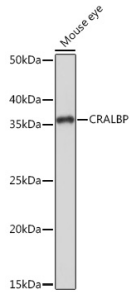
## Anti-CRALBP Antibody [ARC1502] (A307741)

### Specifications:

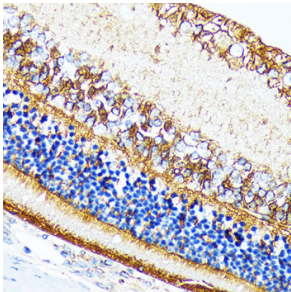
Name:	Anti-CRALBP Antibody [ARC1502]
Description:	Rabbit monoclonal [ARC1502] antibody to CRALBP.
Applications:	WB, IHC, ICC/IF
Recommended Dilutions:	WB: 1:500-1:2,000, IHC: 1:50-1:200, ICC/IF: 1:50-1:200
Reactivity:	Human, Mouse, Rat
Immunogen:	A synthetic peptide corresponding to a sequence within amino acids 1-100 of human CRALBP (P12271).
Sequence:	MSEGVGTFRMVPEEEQELRAQLEQLTTKDHGPFVFGPCSQLPRHTLQKAKDELNEREET REEAVRELQEMVQAQAASGEELAVAVAERVQEKDSGFFLRFI
Host:	Rabbit
Clonality:	Monoclonal
Clone ID:	ARC1502
Isotype:	IgG
Conjugate:	Unconjugated
Purification:	Affinity purification.
Molecular Weight:	36 kDa
Product Form:	Liquid
Formulation:	Supplied in Phosphate Buffered Saline, pH 7.3, with 50% Glycerol, 0.05% BSA, and 0.02% Sodium Azide.
Storage:	Shipped at 4°C. Upon delivery aliquot and store at -20°C. Avoid freeze / thaw cycles.
Disclaimer:	This product is for research use only. It is not intended for diagnostic or therapeutic use.

## Anti-CRALBP Antibody [ARC1502] (A307741)

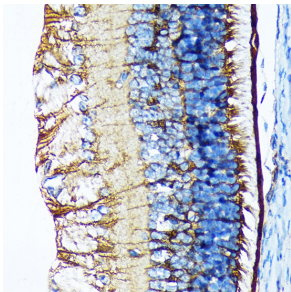
### Images:



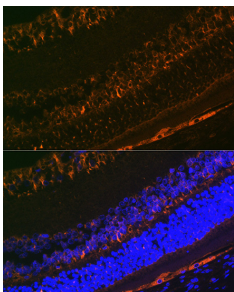
Western blot analysis of extracts of Mouse eye, using Anti-CRALBP Antibody [ARC1502] (A307741) at 1:1,000 dilution. The secondary antibody was Goat Anti-Rabbit IgG H&L Antibody (HRP) at 1:10,000 dilution. Lysates/proteins were present at 25 $\mu$ g per lane. The blocking buffer used was 3% non-fat dry milk in TBST. Detection was with a ECL Basic Kit. Exposure time: 1s.



Immunohistochemistry analysis of paraffin-embedded rat retina using Anti-CRALBP Antibody [ARC1502] (A307741) at a dilution of 1:100 (40x lens). Perform microwave antigen retrieval with 10 mM Tris/EDTA buffer pH 9.0 before commencing with IHC staining protocol.



Immunohistochemistry analysis of paraffin-embedded mouse retina using Anti-CRALBP Antibody [ARC1502] (A307741) at a dilution of 1:100 (40x lens). Perform microwave antigen retrieval with 10 mM Tris/EDTA buffer pH 9.0 before commencing with IHC staining protocol.



Immunofluorescence analysis of rat eye using Anti-CRALBP Antibody [ARC1502] (A307741) at a dilution of 1:100 (40x lens). DAPI was used to stain the cell nuclei (blue).