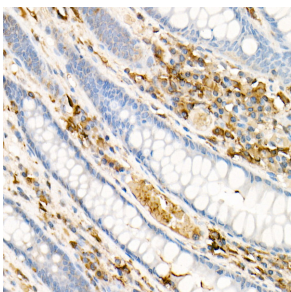


Anti-Ferritin Light Chain Antibody (A307861)

Specifications:

Name:	Anti-Ferritin Light Chain Antibody
Description:	Rabbit polyclonal antibody to Ferritin Light Chain.
Applications:	IHC
Recommended Dilutions:	IHC: 1:50-1:200
Reactivity:	Human
Immunogen:	Recombinant fusion protein containing a sequence corresponding to amino acids 1-175 of human Ferritin Light Chain (NP_000137.2).
Sequence:	MSSQIRQNYSTDVEAAVNSLVNLYLQASYTYLSLGFYFDRDDVALEGVSHFFRELAEE KREGYERLLKMQNQRGGRALFQDIKKPAEDEWKGKTPDAMKAAMALEKKNQALLDLHA LGSARTDPHLCDFLETHFLDEEVKLIKMGDHLTNLHRLGGPEAGLGEYLFERLTLKH D
Host:	Rabbit
Clonality:	Polyclonal
Isotype:	IgG
Conjugate:	Unconjugated
Purification:	Affinity purification.
Product Form:	Liquid
Formulation:	Supplied in Phosphate Buffered Saline, pH 7.3, with 50% Glycerol and 0.05% Proclin 300.
Storage:	Shipped at 4°C. Upon delivery aliquot and store at -20°C. Avoid freeze / thaw cycles.
Disclaimer:	This product is for research use only. It is not intended for diagnostic or therapeutic use.

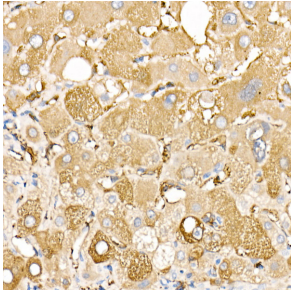
Images:



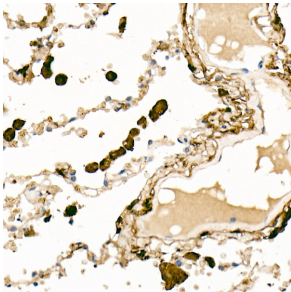
Immunohistochemistry analysis of paraffin-embedded human colon tissue using Anti-Ferritin Light Chain Antibody (A307861) at a dilution of 1:50 (40x lens). Perform high pressure antigen retrieval with 10 mM citrate buffer pH 6.0 before commencing with IHC staining protocol.

Anti-Ferritin Light Chain Antibody (A307861)

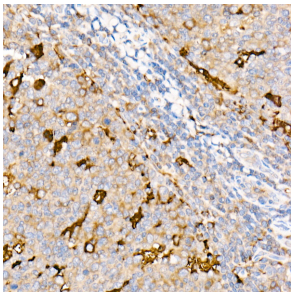
Images continued:



Immunohistochemistry analysis of paraffin-embedded human liver using Anti-Ferritin Light Chain Antibody (A307861) at a dilution of 1:50 (40x lens). Perform high pressure antigen retrieval with 10 mM citrate buffer pH 6.0 before commencing with IHC staining protocol.



Immunohistochemistry analysis of paraffin-embedded human lung using Anti-Ferritin Light Chain Antibody (A307861) at a dilution of 1:50 (40x lens). Perform high pressure antigen retrieval with 10 mM citrate buffer pH 6.0 before commencing with IHC staining protocol.



Immunohistochemistry analysis of paraffin-embedded human tonsil using Anti-Ferritin Light Chain Antibody (A307861) at a dilution of 1:50 (40x lens). Perform high pressure antigen retrieval with 10 mM citrate buffer pH 6.0 before commencing with IHC staining protocol.