

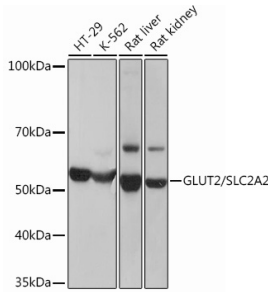
Anti-Glucose Transporter GLUT2 Antibody [ARC0305] (A307905)

Specifications:

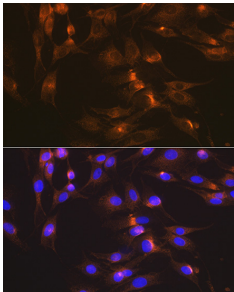
Name:	Anti-Glucose Transporter GLUT2 Antibody [ARC0305]
Description:	Rabbit monoclonal [ARC0305] antibody to Glucose Transporter GLUT2.
Applications:	WB, ICC/IF
Recommended Dilutions:	WB: 1:500-1:2,000, ICC/IF: 1:50-1:200
Reactivity:	Human, Mouse, Rat
Immunogen:	A synthetic peptide corresponding to a sequence within amino acids 1-100 of human GLUT2/SLC2A2 (P11168).
Sequence:	MTEDKVTGTLVFTVITAVLGSFQFGYDIGVINAPQQVIISHYRHVPLGVPLDDRKAINN YVINSTDELPTISYSMNPKPTPWAEETVAAAQLITMLWSLS
Host:	Rabbit
Clonality:	Monoclonal
Clone ID:	ARC0305
Isotype:	IgG
Conjugate:	Unconjugated
Purification:	Affinity purification.
Molecular Weight:	57 kDa
Product Form:	Liquid
Formulation:	Supplied in Phosphate Buffered Saline, pH 7.3, with 50% Glycerol, 0.05% BSA, and 0.02% Sodium Azide.
Storage:	Shipped at 4°C. Upon delivery aliquot and store at -20°C. Avoid freeze / thaw cycles.
Disclaimer:	This product is for research use only. It is not intended for diagnostic or therapeutic use.

Anti-Glucose Transporter GLUT2 Antibody [ARC0305] (A307905)

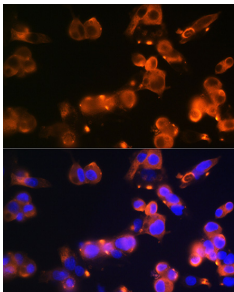
Images:



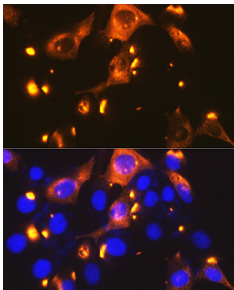
Western blot analysis of extracts of various cell lines, using Anti-Glucose Transporter GLUT2 Antibody [ARC0305] (A307905) at 1:3,000 dilution. The secondary antibody was Goat Anti-Rabbit IgG H&L Antibody (HRP) at 1:10,000 dilution. Lysates/proteins were present at 25µg per lane. The blocking buffer used was 3% non-fat dry milk in TBST. Detection was with a ECL Basic Kit. Exposure time: 3s.



Immunofluorescence analysis of C6 cells using Anti-Glucose Transporter GLUT2 Antibody [ARC0305] (A307905) at a dilution of 1:100 (40x lens). DAPI was used to stain the cell nuclei (blue).



Immunofluorescence analysis of Hep G2 cells using Anti-Glucose Transporter GLUT2 Antibody [ARC0305] (A307905) at a dilution of 1:100 (40x lens). DAPI was used to stain the cell nuclei (blue).



Immunofluorescence analysis of NIH-3T3 cells using Anti-Glucose Transporter GLUT2 Antibody [ARC0305] (A307905) at a dilution of 1:100 (40x lens). DAPI was used to stain the cell nuclei (blue).