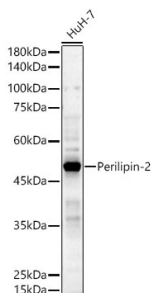


Anti-ADFP Antibody (A308051)

Specifications:

Name:	Anti-ADFP Antibody
Description:	Rabbit polyclonal antibody to ADFP.
Applications:	WB, ICC/IF
Recommended Dilutions:	WB: 1:100-1:500, ICC/IF: 1:50-1:200
Reactivity:	Human, Rat
Immunogen:	A synthetic peptide corresponding to a sequence within amino acids 338-437 of human Perilipin-2 (NP_001113.2).
Sequence:	NIQDQAKHMGVMAGDIYSVFRNAASFKEVSDSLLTSSKQQLQKMKESLDDVMDYLVNN TPLNWLVGPFYPQLTESQNAQDQGAEMDKSSQETQRSEHKTH
Host:	Rabbit
Clonality:	Polyclonal
Isotype:	IgG
Conjugate:	Unconjugated
Purification:	Affinity purification.
Molecular Weight:	48 kDa
Product Form:	Liquid
Formulation:	Supplied in Phosphate Buffered Saline, pH 7.3, with 50% Glycerol and 0.05% Proclin 300.
Storage:	Shipped at 4°C. Upon delivery aliquot and store at -20°C. Avoid freeze / thaw cycles.
Disclaimer:	This product is for research use only. It is not intended for diagnostic or therapeutic use.

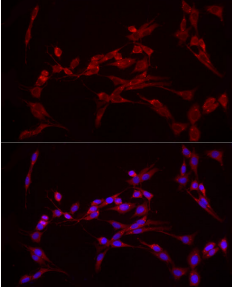
Images:



Western blot analysis of extracts of HuH-7, using Anti-ADFP Antibody (A308051) at 1:500 dilution. The secondary antibody was Goat Anti-Rabbit IgG H&L Antibody (HRP) at 1:10,000 dilution. Lysates/proteins were present at 25µg per lane. The blocking buffer used was 3% non-fat dry milk in TBST. Detection was with a ECL Basic Kit. Exposure time: 10s.

Anti-ADFP Antibody (A308051)

Images continued:



Immunofluorescence analysis of PC-12 cells using Anti-ADFP Antibody (A308051) at a dilution of 1:50 (40x lens). DAPI was used to stain the cell nuclei (blue).