

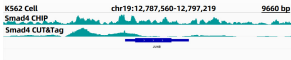
## Anti-Smad4 Antibody [ARC5009-06] (A308139)

### Specifications:

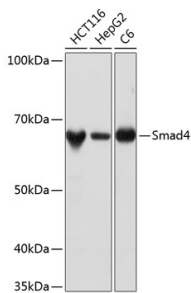
Name:	Anti-Smad4 Antibody [ARC5009-06]
Description:	Rabbit monoclonal [ARC5009-06] antibody to Smad4.
Applications:	WB, IHC, IP, ChIP
Recommended Dilutions:	WB: 1:500-1:2,000, IHC: 1:50-1:200, IP: 1:500-1:1,000, ChIP: 1:500-1:1,000, CUT&Tag: 16 cells/1µg
Reactivity:	Human, Mouse, Rat
Immunogen:	Recombinant fusion protein containing a sequence corresponding to amino acids 320-552 of human Smad4 (NP_005350.1).
Sequence:	PEYWCSIAFYFEMDVQVGETFKVPSSCPIVTVDGYVDPSGGDRFCLGQLSNVHRTEAIE RARLHIGKGVQLECKGEGDVWVRCLSDHAVFVQSYLDREAGRAPGDAVHKIYPSAYI KVFDLRQCHRQMQQQAATAQAAAAAQAQAAVAGNIPGPGSVGGIAPAISLSAAAGIGVD DLRRLCILRMSFVKGWGPDYPRQSIKETPCWIEIHLHRALQLLDEVLHTMPIADPQPL D
Host:	Rabbit
Clonality:	Monoclonal
Clone ID:	ARC5009-06
Isotype:	IgG
Conjugate:	Unconjugated
Purification:	Affinity purification.
Molecular Weight:	65 kDa
Product Form:	Liquid
Formulation:	Supplied in Phosphate Buffered Saline, pH 7.3, with 50% Glycerol, 0.05% BSA, and 0.01% Thiomersal.
Storage:	Shipped at 4°C. Upon delivery aliquot and store at -20°C. Avoid freeze / thaw cycles.
Disclaimer:	This product is for research use only. It is not intended for diagnostic or therapeutic use.

## Anti-Smad4 Antibody [ARC5009-06] (A308139)

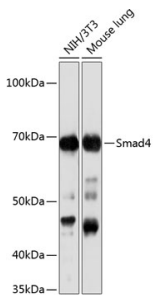
### Images:



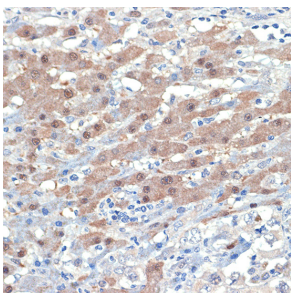
CUT&Tag was performed using the CUT&Tag Assay Kit (pAG-Tn5) for Illumina from 105 K562 cells with 1µg of Anti-Smad4 Antibody [ARC5009-06] (A308139), and Goat Anti-Rabbit IgG H&L Antibody. The CUT&Tag results indicate the enrichment pattern of Smad4 in representative gene loci (JUNB), as shown in figure.



Western blot analysis of extracts of various cell lines, using Anti-Smad4 Antibody [ARC5009-06] (A308139) at 1:1,000 dilution. The secondary antibody was Goat Anti-Rabbit IgG H&L Antibody (HRP) at 1:10,000 dilution. Lysates/proteins were present at 25µg per lane. The blocking buffer used was 3% non-fat dry milk in TBST. Detection was with a ECL Basic Kit. Exposure time: 10s.



Western blot analysis of extracts of various cell lines, using Anti-Smad4 Antibody [ARC5009-06] (A308139) at 1:1,000 dilution. The secondary antibody was Goat Anti-Rabbit IgG H&L Antibody (HRP) at 1:10,000 dilution. Lysates/proteins were present at 25µg per lane. The blocking buffer used was 3% non-fat dry milk in TBST. Detection was with a ECL Basic Kit. Exposure time: 3min.



Immunohistochemistry analysis of paraffin-embedded human liver cancer using Anti-Smad4 Antibody [ARC5009-06] (A308139) at a dilution of 1:100 (40x lens). Perform microwave antigen retrieval with 10 mM Tris/EDTA buffer pH 9.0 before commencing with IHC staining protocol.