

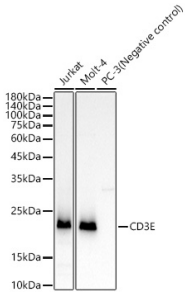
## Anti-CD3 epsilon Antibody [ARC51750] (A308227)

### Specifications:

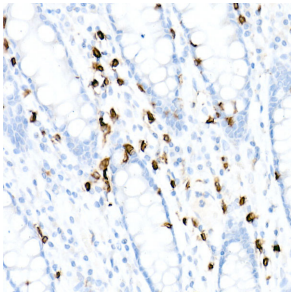
Name:	Anti-CD3 epsilon Antibody [ARC51750]
Description:	Rabbit monoclonal [ARC51750] antibody to CD3 epsilon.
Applications:	WB, IHC, Flow Cytometry
Recommended Dilutions:	WB: 1:500-1:2,000, IHC: 1:500-1:1,000, Flow Cytometry: 1:50-1:200
Reactivity:	Human, Mouse, Rat
Immunogen:	A synthetic peptide corresponding to a sequence within amino acids 50-150 of human CD3E (NP_000724.1).
Sequence:	PQYPGSEILWQHNDKNIGGDEDDKNIGSDEDHLSLKEFSELEQSGYYVCYPRGSKPED ANFYLYLRARVCENCMEMDVMSVATIVIVDICITGGLLLLVIYY
Host:	Rabbit
Clonality:	Monoclonal
Clone ID:	ARC51750
Isotype:	IgG
Conjugate:	Unconjugated
Purification:	Affinity purification.
Molecular Weight:	23 kDa
Product Form:	Liquid
Formulation:	Supplied in Phosphate Buffered Saline, pH 7.3, with 50% Glycerol, 0.05% BSA, and 0.05% Proclin 300.
Storage:	Shipped at 4°C. Upon delivery aliquot and store at -20°C. Avoid freeze / thaw cycles.
Disclaimer:	This product is for research use only. It is not intended for diagnostic or therapeutic use.

## Anti-CD3 epsilon Antibody [ARC51750] (A308227)

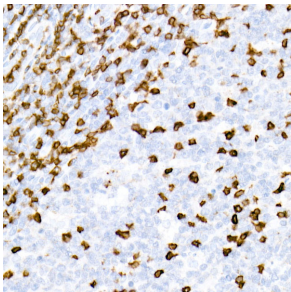
### Images:



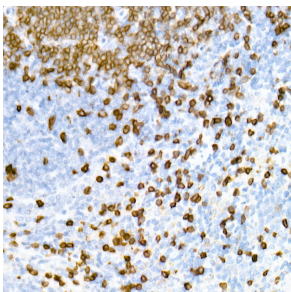
Western blot analysis of extracts of Jurkat cells, using Anti-CD3 epsilon Antibody [ARC51750] (A308227) at 1:1,000 dilution. The secondary antibody was Goat Anti-Rabbit IgG H&L Antibody (HRP) at 1:10,000 dilution. Lysates/proteins were present at 25µg per lane. The blocking buffer used was 3% non-fat dry milk in TBST. Detection was with a ECL Enhanced Kit (RM00021). Exposure time: 3min.



Immunohistochemistry analysis of paraffin-embedded human colon tissue using Anti-CD3 epsilon Antibody [ARC51750] (A308227) at a dilution of 1:1,000 (40x lens). Perform high pressure antigen retrieval with 10 mM citrate buffer pH 6.0 before commencing with IHC staining protocol.



Immunohistochemistry analysis of paraffin-embedded human tonsil using Anti-CD3 epsilon Antibody [ARC51750] (A308227) at a dilution of 1:1,000 (40x lens). Perform high pressure antigen retrieval with 10 mM citrate buffer pH 6.0 before commencing with IHC staining protocol.



Immunohistochemistry analysis of paraffin-embedded mouse spleen using Anti-CD3 epsilon Antibody [ARC51750] (A308227) at a dilution of 1:1,000 (40x lens). Perform high pressure antigen retrieval with 10 mM citrate buffer pH 6.0 before commencing with IHC staining protocol.