

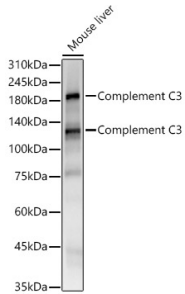
Anti-C3 Antibody [ARC56851] (A308585)

Specifications:

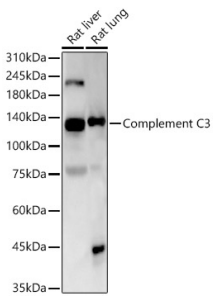
Name:	Anti-C3 Antibody [ARC56851]
Description:	Rabbit monoclonal [ARC56851] antibody to C3.
Applications:	WB
Recommended Dilutions:	WB: 1:500-1:1,000
Reactivity:	Mouse, Rat
Immunogen:	Recombinant fusion protein containing a sequence corresponding to amino acids 1364-1663 of mouse Complement C3 (NP_033908.2).
Sequence:	RVSIRPAPETAKKPEEAKNTMFLEICTKYLGDVDATMSILDISMMTGAFPTKDLELL ASGVDRYISKYEMNKAFSNKNTLIILEKISHTTEEDCLTFKVHQYFNVGLIQPGSVKV YSYYNLEESCTRFYHPEKDDGMLSKLCHSEMCRCAEENC FMQQSQEKINLNVRLDKAC EPGVDYVYKTEL TNIELLDDFDEYTM TIQQVIKSGSDEVQAGQQRKFISHIKCRNALK LQKGKKYLMWGLSSDLWGEKPNTSYIIGKDTWVEHWPEAEECQDQKYQKQCEELGAFT ESMVVYGCPN
Host:	Rabbit
Clonality:	Monoclonal
Clone ID:	ARC56851
Isotype:	IgG
Conjugate:	Unconjugated
Purification:	Affinity purification.
Molecular Weight:	115 kDa / 187 kDa
Product Form:	Liquid
Formulation:	Supplied in Phosphate Buffered Saline, pH 7.3, with 50% Glycerol, 0.05% BSA, and 0.05% Proclin 300.
Storage:	Shipped at 4°C. Upon delivery aliquot and store at -20°C. Avoid freeze / thaw cycles.
Disclaimer:	This product is for research use only. It is not intended for diagnostic or therapeutic use.

Anti-C3 Antibody [ARC56851] (A308585)

Images:



Western blot analysis of Mouse liver, using Anti-C3 Antibody [ARC56851] (A308585) at 1:1,000 dilution. The secondary antibody was Goat Anti-Rabbit IgG H&L Antibody (HRP) at 1:10,000 dilution. Lysates/proteins were present at 25 μ g per lane. The blocking buffer used was 3% non-fat dry milk in TBST. Detection was with a ECL Basic Kit. Exposure time: 10s.



Western blot analysis of various lysates, using Anti-C3 Antibody [ARC56851] (A308585) at 1:1,000 dilution. The secondary antibody was Goat Anti-Rabbit IgG H&L Antibody (HRP) at 1:10,000 dilution. Lysates/proteins were present at 25 μ g per lane. The blocking buffer used was 3% non-fat dry milk in TBST. Detection was with a ECL Basic Kit. Exposure time: 10s.