

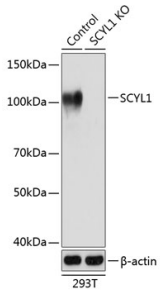
Anti-SCYL1 Antibody (A308603)

Specifications:

Name:	Anti-SCYL1 Antibody
Description:	Rabbit polyclonal antibody to SCYL1.
Applications:	WB, IHC, ICC/IF
Recommended Dilutions:	WB: 1:500-1:2,000, IHC: 1:50-1:200, ICC/IF: 1:50-1:100
Reactivity:	Human, Mouse, Rat
Immunogen:	Recombinant fusion protein containing a sequence corresponding to amino acids 460-740 of human SCYL1 (NP_065731.3).
Sequence:	SASTRHRVLTSAFSRATRDPFAPSRVAGVLGFAATHNLYSMNDCAQKILPVLGCLTVD PEKSVRDQAFKAIRSFLSKLESVSEDPTQLEEVKDVHAASSPGMGGAAASWAGWAVT GVSSLTSKLIRSHPTTAPTETNIPQRPTPEGVPAPAPTPVPATPTTSGHWETQEEDKD TAEDSSTADRWDDEDWGSLEQEAESVLAQQDDWSTGGQVSRASQVSNSDHSKSSKSPES DWSSWEAEGSWEQGWQEPSSQEPDPTGTRLASEYNWGGPESSDKGDPFA
Host:	Rabbit
Clonality:	Polyclonal
Isotype:	IgG
Conjugate:	Unconjugated
Purification:	Affinity purification.
Molecular Weight:	105 kDa
Product Form:	Liquid
Formulation:	Supplied in Phosphate Buffered Saline, pH 7.3, with 50% Glycerol and 0.01% Thiomersal.
Storage:	Shipped at 4°C. Upon delivery aliquot and store at -20°C. Avoid freeze / thaw cycles.
Disclaimer:	This product is for research use only. It is not intended for diagnostic or therapeutic use.

Anti-SCYL1 Antibody (A308603)

Images:



Western blot analysis of extracts from normal (control) and SCYL1 knockout (KO) 293T cells, using Anti-SCYL1 Antibody (A308603) at 1:1,000 dilution. The secondary antibody was Goat Anti-Rabbit IgG H&L Antibody (HRP) at 1:10,000 dilution. Lysates/proteins were present at 25µg per lane. The blocking buffer used was 3% non-fat dry milk in TBST. Detection was with a ECL Basic Kit. Exposure time: 1s.