

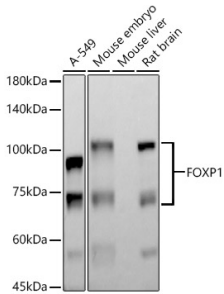
## Anti-FOXP1 Antibody [ARC1624] (A308674)

### Specifications:

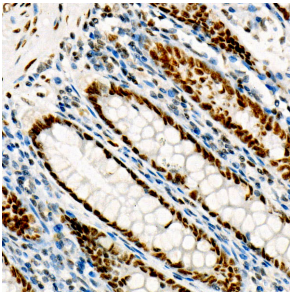
Name:	Anti-FOXP1 Antibody [ARC1624]
Description:	Rabbit monoclonal [ARC1624] antibody to FOXP1.
Applications:	WB, IHC, ICC/IF
Recommended Dilutions:	WB: 1:1,000-1:5,000, IHC: 1:100-1:500, ICC/IF: 1:50-1:200
Reactivity:	Human, Mouse, Rat
Immunogen:	Recombinant Protein corresponding to a sequence within amino acids 550-650 of human FOXP1 (Q9H334).
Sequence:	SGNPSLIKMQSSHAYCTPLNAALQASMAENSIPLYTTASMGNP TLGNLASAIREELN GAMEHTNSNESDSSPGRSPMQAVHPVHVKEEP LDPEEAEGPLS
Host:	Rabbit
Clonality:	Monoclonal
Clone ID:	ARC1624
Isotype:	IgG
Conjugate:	Unconjugated
Purification:	Affinity purification.
Molecular Weight:	70 - 90 kDa
Product Form:	Liquid
Formulation:	Supplied in Phosphate Buffered Saline, pH 7.3, with 50% Glycerol, 0.05% BSA, and 0.02% Sodium Azide.
Storage:	Shipped at 4°C. Upon delivery aliquot and store at -20°C. Avoid freeze / thaw cycles.
Disclaimer:	This product is for research use only. It is not intended for diagnostic or therapeutic use.

## Anti-FOXP1 Antibody [ARC1624] (A308674)

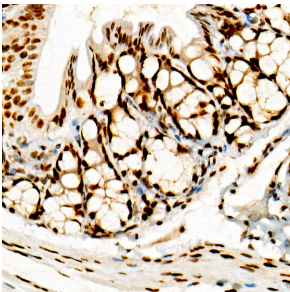
### Images:



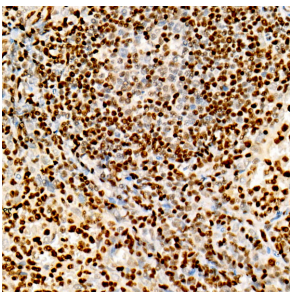
Western blot analysis of various lysates, using Anti-FOXP1 Antibody [ARC1624] (A308674) at 1:3,000 dilution. The secondary antibody was Goat Anti-Rabbit IgG H&L Antibody (HRP) at 1:10,000 dilution. Lysates/proteins were present at 25 $\mu$ g per lane. The blocking buffer used was 3% non-fat dry milk in TBST. Detection was with a ECL Basic Kit. Exposure time: 180s.



Immunohistochemistry analysis of paraffin-embedded human colon tissue using Anti-FOXP1 Antibody [ARC1624] (A308674) at a dilution of 1:500 (40x lens). Perform high pressure antigen retrieval with 10 mM citrate buffer pH 6.0 before commencing with IHC staining protocol.



Immunohistochemistry analysis of paraffin-embedded mouse intestine using Anti-FOXP1 Antibody [ARC1624] (A308674) at a dilution of 1:500 (40x lens). Perform high pressure antigen retrieval with 10 mM citrate buffer pH 6.0 before commencing with IHC staining protocol.



Immunohistochemistry analysis of paraffin-embedded rat spleen using Anti-FOXP1 Antibody [ARC1624] (A308674) at a dilution of 1:500 (40x lens). Perform high pressure antigen retrieval with 10 mM citrate buffer pH 6.0 before commencing with IHC staining protocol.