

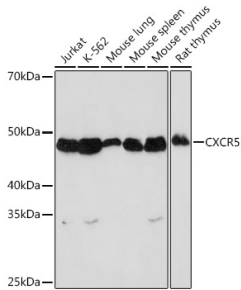
Anti-CXCR5 Antibody [ARC1363] (A308772)

Specifications:

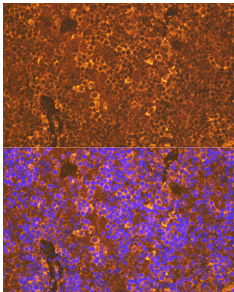
Name:	Anti-CXCR5 Antibody [ARC1363]
Description:	Rabbit monoclonal [ARC1363] antibody to CXCR5.
Applications:	WB, ICC/IF
Recommended Dilutions:	WB: 1:500-1:2,000, ICC/IF: 1:50-1:200
Reactivity:	Human, Mouse, Rat
Immunogen:	A synthetic peptide corresponding to a sequence within amino acids 273-372 of human CXCR5 (P32302).
Sequence:	SPYHIVIFLDTLARLKAVDNTCKLNGSLPVAITMCEFLGLAHCCCLNPMLYTFAGVKFR SDLSRLLTKLGCTGPASLCQLFPSWRRSSLSESENATSLTTF
Host:	Rabbit
Clonality:	Monoclonal
Clone ID:	ARC1363
Isotype:	IgG
Conjugate:	Unconjugated
Purification:	Affinity purification.
Molecular Weight:	45 kDa
Product Form:	Liquid
Formulation:	Supplied in Phosphate Buffered Saline, pH 7.3, with 50% Glycerol, 0.05% BSA, and 0.02% Sodium Azide.
Storage:	Shipped at 4°C. Upon delivery aliquot and store at -20°C. Avoid freeze / thaw cycles.
Disclaimer:	This product is for research use only. It is not intended for diagnostic or therapeutic use.

Anti-CXCR5 Antibody [ARC1363] (A308772)

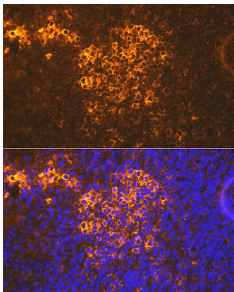
Images:



Western blot analysis of extracts of various cell lines, using Anti-CXCR5 Antibody [ARC1363] (A308772) at 1:1,000 dilution. The secondary antibody was Goat Anti-Rabbit IgG H&L Antibody (HRP) at 1:10,000 dilution. Lysates/proteins were present at 25µg per lane. The blocking buffer used was 3% non-fat dry milk in TBST. Detection was with a ECL Basic Kit. Exposure time: 90s.



Immunofluorescence analysis of rat spleen using Anti-CXCR5 Antibody [ARC1363] (A308772) at a dilution of 1:100 (40x lens). DAPI was used to stain the cell nuclei (blue).



Immunofluorescence analysis of mouse spleen using Anti-CXCR5 Antibody [ARC1363] (A308772) at a dilution of 1:100 (40x lens). DAPI was used to stain the cell nuclei (blue).