

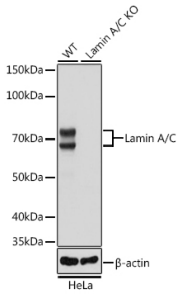
Anti-Lamin A Antibody [ARC5001-08] (A308800)

Specifications:

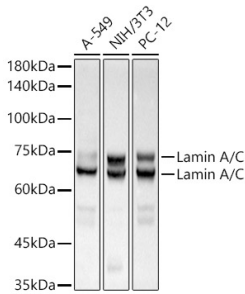
Name:	Anti-Lamin A Antibody [ARC5001-08]
Description:	Rabbit monoclonal [ARC5001-08] antibody to Lamin A.
Applications:	WB, IHC, ICC/IF, IP
Recommended Dilutions:	WB: 1:10,000-1:60,000, IHC: 1:50-1:400, ICC/IF: 1:50-1:200, IP: 1:10,000-1:120,000
Reactivity:	Human, Mouse, Rat
Immunogen:	Recombinant fusion protein containing a sequence corresponding to amino acids 403-572 of human Lamin A/C (NP_733821.1).
Sequence:	SSHSSQTQGGGSVTKKRKLESTESRSSFSQHARTSGRVAVEEVDEEGKFVRLRNKSNE DQSMGNWQIKRQNGDDPLLTYRFPPKFTLKAGQVVTIWAAGAGATHSPPTDLVWKAQN TWGCGNSLRTALINSTGEEVAMRKLVRSVTVVEDEDEDGDDLLHHHHGSHCSS
Host:	Rabbit
Clonality:	Monoclonal
Clone ID:	ARC5001-08
Isotype:	IgG
Conjugate:	Unconjugated
Purification:	Affinity purification.
Molecular Weight:	68 kDa / 72 kDa
Product Form:	Liquid
Formulation:	Supplied in Phosphate Buffered Saline, pH 7.3, with 50% Glycerol, 0.05% BSA, and 0.01% Thiomersal.
Storage:	Shipped at 4°C. Upon delivery aliquot and store at -20°C. Avoid freeze / thaw cycles.
Disclaimer:	This product is for research use only. It is not intended for diagnostic or therapeutic use.

Anti-Lamin A Antibody [ARC5001-08] (A308800)

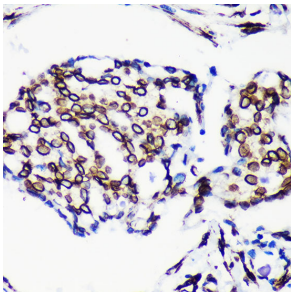
Images:



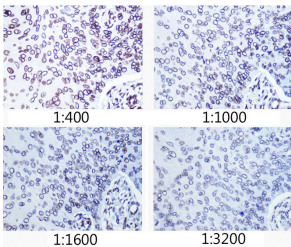
Western blot analysis of extracts from wild type (WT) and Lamin A/C knockout (KO) HeLa cells, using Anti-Lamin A Antibody [ARC5001-08] (A308800) at 1:50,000 dilution. The secondary antibody was Goat Anti-Rabbit IgG H&L Antibody (HRP) at 1:10,000 dilution. Lysates/proteins were present at 25µg per lane. The blocking buffer used was 3% non-fat dry milk in TBST. Detection was with a ECL Basic Kit. Exposure time: 1s.



Western blot analysis of extracts of various cell lines, using Anti-Lamin A Antibody [ARC5001-08] (A308800) at 1:500000 dilution. The secondary antibody was Goat Anti-Rabbit IgG H&L Antibody (HRP) at 1:10,000 dilution. Lysates/proteins were present at 25µg per lane. The blocking buffer used was 3% non-fat dry milk in TBST. Detection was with a ECL Basic Kit. Exposure time: 3s.



Immunohistochemistry analysis of paraffin-embedded human breast cancer tissue using Anti-Lamin A Antibody [ARC5001-08] (A308800) at a dilution of 1:200 (40x lens). Perform microwave antigen retrieval with 10 mM PBS buffer pH 7.2 before commencing with IHC staining protocol.



Immunohistochemistry analysis of paraffin-embedded human esophageal cancer using Anti-Lamin A Antibody [ARC5001-08] (A308800) at a dilution of 1:400 - 1:3200 (40x lens). Perform microwave antigen retrieval with 10 mM PBS buffer pH 7.2 before commencing with IHC staining protocol.