

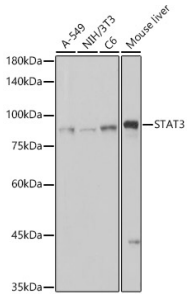
Anti-STAT3 Antibody [ARC2603] (A308912)

Specifications:

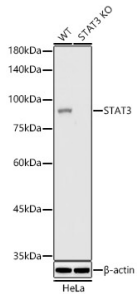
Name:	Anti-STAT3 Antibody [ARC2603]
Description:	Rabbit monoclonal [ARC2603] antibody to STAT3.
Applications:	WB, IHC, IP
Recommended Dilutions:	WB: 1:500-1:1,000, IHC: 1:50-1:200, IP: 1:50-1:200
Reactivity:	Human, Mouse, Rat
Immunogen:	A synthetic peptide corresponding to a sequence within amino acids 600-700 of human STAT3 (P40763).
Sequence:	TKPPGTFLLRFSSESSKEGGVTFTWVEKDISGKTQIQSVEPYTKQQLNNMSFAEIIMGY KIMDATNILVSPLVLYLPDIPKEEAFGKYCRPESQEHPEADPG
Host:	Rabbit
Clonality:	Monoclonal
Clone ID:	ARC2603
Isotype:	IgG
Conjugate:	Unconjugated
Purification:	Affinity purification.
Molecular Weight:	86 kDa
Product Form:	Liquid
Formulation:	Supplied in Phosphate Buffered Saline, pH 7.3, with 50% Glycerol, 0.05% BSA, and 0.02% Sodium Azide.
Storage:	Shipped at 4°C. Upon delivery aliquot and store at -20°C. Avoid freeze / thaw cycles.
Disclaimer:	This product is for research use only. It is not intended for diagnostic or therapeutic use.

Anti-STAT3 Antibody [ARC2603] (A308912)

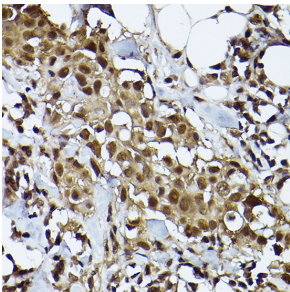
Images:



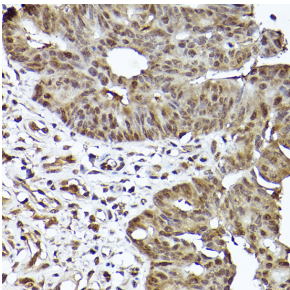
Western blot analysis of various lysates, using Anti-STAT3 Antibody [ARC2603] (A308912) at 1:1,000 dilution. The secondary antibody was Goat Anti-Rabbit IgG H&L Antibody (HRP) at 1:10,000 dilution. Lysates/proteins were present at 25µg per lane. The blocking buffer used was 3% non-fat dry milk in TBST. Detection was with a ECL Basic Kit. Exposure time: 1s.



Western blot analysis of extracts from normal (control) and STAT3 knockout (KO) HeLa(KO) cells, using Anti-STAT3 Antibody [ARC2603] (A308912) at 1:1,000 dilution. The secondary antibody was Goat Anti-Rabbit IgG H&L Antibody (HRP) at 1:10,000 dilution. Lysates/proteins were present at 25µg per lane. The blocking buffer used was 3% non-fat dry milk in TBST. Detection was with a ECL Basic Kit. Exposure time: 1s.



Immunohistochemistry analysis of paraffin-embedded human breast cancer tissue using Anti-STAT3 Antibody [ARC2603] (A308912) at a dilution of 1:100 (40x lens). Perform high pressure antigen retrieval with 10 mM citrate buffer pH 6.0 before commencing with IHC staining protocol.



Immunohistochemistry analysis of paraffin-embedded human colon carcinoma tissue using Anti-STAT3 Antibody [ARC2603] (A308912) at a dilution of 1:100 (40x lens). Perform high pressure antigen retrieval with 10 mM citrate buffer pH 6.0 before commencing with IHC staining protocol.