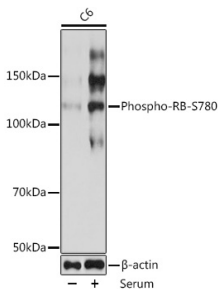


Anti-Rb (phospho Ser780) Antibody [ARC0096] (A308931)

Specifications:

Name:	Anti-Rb (phospho Ser780) Antibody [ARC0096]
Description:	Rabbit monoclonal [ARC0096] antibody to Rb (phospho Ser780).
Applications:	WB, IHC
Recommended Dilutions:	WB: 1:500-1:2,000, IHC: 1:50-1:200
Reactivity:	Human, Mouse, Rat
Immunogen:	A synthetic phosphorylated peptide around S780 of human RB (P06400).
Sequence:	TLSPI
Host:	Rabbit
Clonality:	Monoclonal
Clone ID:	ARC0096
Isotype:	IgG
Conjugate:	Unconjugated
Purification:	Affinity purification.
Molecular Weight:	106 kDa
Product Form:	Liquid
Formulation:	Supplied in Phosphate Buffered Saline, pH 7.3, with 50% Glycerol, 0.05% BSA, and 0.05% Proclin 300.
Storage:	Shipped at 4°C. Upon delivery aliquot and store at -20°C. Avoid freeze / thaw cycles.
Disclaimer:	This product is for research use only. It is not intended for diagnostic or therapeutic use.

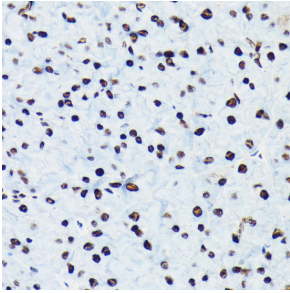
Images:



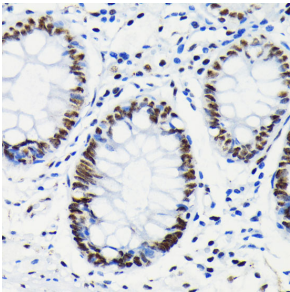
Western blot analysis of extracts of C6 cells, using Anti-Rb (phospho Ser780) Antibody [ARC0096] (A308931) at 1:1,000 dilution. C6 cells were treated by 10% FBS at 37°C for 30 minutes after serum-starvation overnight. The secondary antibody was Goat Anti-Rabbit IgG H&L Antibody (HRP) at 1:10,000 dilution. Lysates/proteins were present at 25µg per lane. The blocking buffer used was 3% non-fat dry milk in TBST. Detection was with a ECL Basic Kit. Exposure time: 10s.

Anti-Rb (phospho Ser780) Antibody [ARC0096] (A308931)

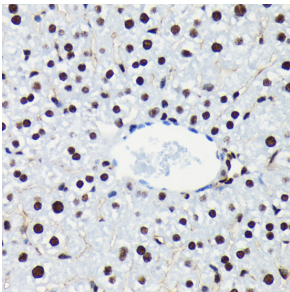
Images continued:



Immunohistochemistry analysis of paraffin-embedded rat pancreas using Anti-Rb (phospho Ser780) Antibody [ARC0096] (A308931) at a dilution of 1:100 (40x lens). Perform microwave antigen retrieval with 10 mM Tris/EDTA buffer pH 9.0 before commencing with IHC staining protocol.



Immunohistochemistry analysis of paraffin-embedded human colon tissue using Anti-Rb (phospho Ser780) Antibody [ARC0096] (A308931) at a dilution of 1:100 (40x lens). Perform microwave antigen retrieval with 10 mM Tris/EDTA buffer pH 9.0 before commencing with IHC staining protocol.



Immunohistochemistry analysis of paraffin-embedded mouse liver using Anti-Rb (phospho Ser780) Antibody [ARC0096] (A308931) at a dilution of 1:100 (40x lens). Perform microwave antigen retrieval with 10 mM Tris/EDTA buffer pH 9.0 before commencing with IHC staining protocol.