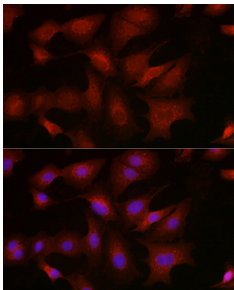


Anti-BMPR1B Antibody (A309037)

Specifications:

Name:	Anti-BMPR1B Antibody
Description:	Rabbit polyclonal antibody to BMPR1B.
Applications:	WB, ICC/IF
Recommended Dilutions:	WB: 1:500-1:2,000, ICC/IF: 1:50-1:200
Reactivity:	Human, Mouse, Rat
Immunogen:	A synthetic peptide corresponding to a sequence within amino acids 450-532 of human BMPR1B (NP_001243722.1).
Sequence:	VEEYQLPYHDLVPSDPSYEDMREIVCIKKLRPSFPNRWSSDECLRQMGKLMTECWAHN PASRLTALRVKKTAKMSESQDIKL
Host:	Rabbit
Clonality:	Polyclonal
Isotype:	IgG
Conjugate:	Unconjugated
Purification:	Affinity purification.
Product Form:	Liquid
Formulation:	Supplied in Phosphate Buffered Saline, pH 7.3, with 50% Glycerol and 0.05% Proclin 300.
Storage:	Shipped at 4°C. Upon delivery aliquot and store at -20°C. Avoid freeze / thaw cycles.
Disclaimer:	This product is for research use only. It is not intended for diagnostic or therapeutic use.

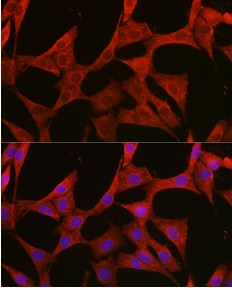
Images:



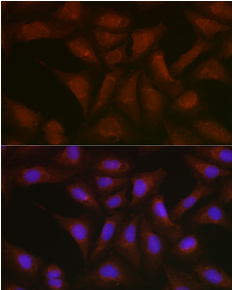
Immunofluorescence analysis of A-549 cells using Anti-BMPR1B Antibody (A309037) at a dilution of 1:200 (40x lens). DAPI was used to stain the cell nuclei (blue).

Anti-BMPR1B Antibody (A309037)

Images continued:



Immunofluorescence analysis of NIH/3T3 cells using Anti-BMPR1B Antibody (A309037) at a dilution of 1:200 (40x lens). DAPI was used to stain the cell nuclei (blue).



Immunofluorescence analysis of U2OS cells using Anti-BMPR1B Antibody (A309037) at a dilution of 1:200 (40x lens). DAPI was used to stain the cell nuclei (blue).