

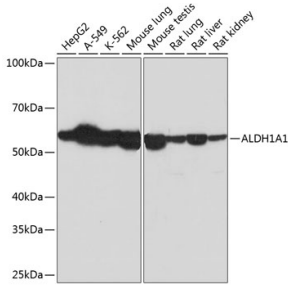
Anti-ALDH1A1 Antibody [ARC52440] (A309053)

Specifications:

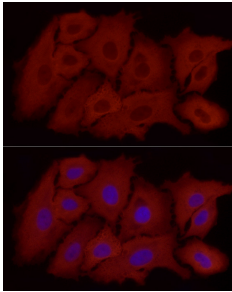
Name:	Anti-ALDH1A1 Antibody [ARC52440]
Description:	Rabbit monoclonal [ARC52440] antibody to ALDH1A1.
Applications:	WB, ICC/IF, IP
Recommended Dilutions:	WB: 1:500-1:2,000, ICC/IF: 1:500-1:1,000, IP: 1:500-1:1,000
Reactivity:	Human, Mouse, Rat
Immunogen:	A synthetic peptide corresponding to a sequence within amino acids 250-350 of human ALDH1A1 (NP_000680.2).
Sequence:	VGKLIKEAAGKSNLKRVTLELGKSPCIVLADADLDNAVEFAHHGVFYHQGCCIAAS RIFVEESIYDEFVRRSVERAKKYILGNPLTPGVTQGPQIDKEQ
Host:	Rabbit
Clonality:	Monoclonal
Clone ID:	ARC52440
Isotype:	IgG
Conjugate:	Unconjugated
Purification:	Affinity purification.
Molecular Weight:	55 kDa
Product Form:	Liquid
Formulation:	Supplied in Phosphate Buffered Saline, pH 7.3, with 50% Glycerol, 0.05% BSA, and 0.05% Proclin 300.
Storage:	Shipped at 4°C. Upon delivery aliquot and store at -20°C. Avoid freeze / thaw cycles.
Disclaimer:	This product is for research use only. It is not intended for diagnostic or therapeutic use.

Anti-ALDH1A1 Antibody [ARC52440] (A309053)

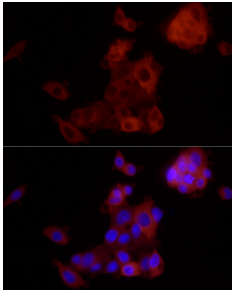
Images:



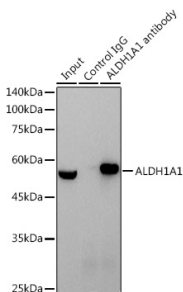
Western blot analysis of extracts of various cell lines, using Anti-ALDH1A1 Antibody [ARC52440] (A309053) at 1:1,000 dilution. The secondary antibody was Goat Anti-Rabbit IgG H&L Antibody (HRP) at 1:10,000 dilution. Lysates/proteins were present at 25µg per lane. The blocking buffer used was 3% non-fat dry milk in TBST. Detection was with a ECL Basic Kit. Exposure time: 60s.



Immunofluorescence analysis of A-549 using Anti-ALDH1A1 Antibody [ARC52440] (A309053) at a dilution of 1:800 (40x lens). DAPI was used to stain the cell nuclei (blue).



Immunofluorescence analysis of HepG2 using Anti-ALDH1A1 Antibody [ARC52440] (A309053) at a dilution of 1:800 (40x lens). DAPI was used to stain the cell nuclei (blue).



Immunoprecipitation analysis of 600µg extracts of mouse testis cells using 3µg of Anti-ALDH1A1 Antibody [ARC52440] (A309053). This Western blot was performed on the immunoprecipitate using Anti-ALDH1A1 Antibody [ARC52440] (A309053) at a dilution of 1:1000.