

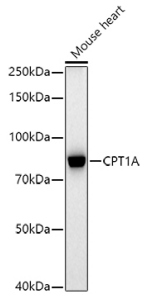
Anti-CPT1A Antibody [ARC51170] (A309159)

Specifications:

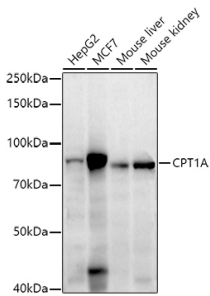
Name:	Anti-CPT1A Antibody [ARC51170]
Description:	Rabbit monoclonal [ARC51170] antibody to CPT1A.
Applications:	WB
Recommended Dilutions:	WB: 1:500-1:1,000
Reactivity:	Human, Mouse, Rat
Immunogen:	Recombinant fusion protein containing a sequence corresponding to amino acids 520-720 of human CPT1A (NP_001867.2).
Sequence:	WDIPGECQEVIETSLNTANLLANDVDFHSFPFVAFGKGIKKCRTSPDAFVQLALQLA HYKDMGKFCLTYEASMTRLFREGRTETVRSCTTESCDFVRAMVDPAQTVEQRLKLFKL ASEKHQHMYRLAMTGSGIDRHLFCLYVVSKYLAVESPFLKEVLSEPWRLSTSQTPQQQ VELFDLENNPEYVSSGGGFGPVADDGY
Host:	Rabbit
Clonality:	Monoclonal
Clone ID:	ARC51170
Isotype:	IgG
Conjugate:	Unconjugated
Purification:	Affinity purification.
Product Form:	Liquid
Formulation:	Supplied in Phosphate Buffered Saline, pH 7.3, with 50% Glycerol, 0.05% BSA, and 0.05% Proclin 300.
Storage:	Shipped at 4°C. Upon delivery aliquot and store at -20°C. Avoid freeze / thaw cycles.
Disclaimer:	This product is for research use only. It is not intended for diagnostic or therapeutic use.

Anti-CPT1A Antibody [ARC51170] (A309159)

Images:



Western blot analysis of extracts of Mouse heart, using Anti-CPT1A Antibody [ARC51170] (A309159) at 1:1,000 dilution. The secondary antibody was Goat Anti-Rabbit IgG H&L Antibody (HRP) at 1:10,000 dilution. Lysates/proteins were present at 25 μ g per lane. The blocking buffer used was 3% non-fat dry milk in TBST. Detection was with a ECL Basic Kit. Exposure time: 180s.



Western blot analysis of extracts of various cell lines, using Anti-CPT1A Antibody [ARC51170] (A309159) at 1:1,000 dilution. The secondary antibody was Goat Anti-Rabbit IgG H&L Antibody (HRP) at 1:10,000 dilution. Lysates/proteins were present at 25 μ g per lane. The blocking buffer used was 3% non-fat dry milk in TBST. Detection was with a ECL Enhanced Kit (RM00021). Exposure time: 180s.