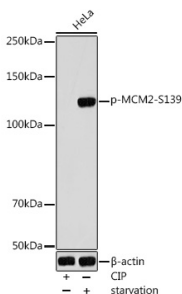


## Anti-MCM2 (phospho Ser139) Antibody (A309197)

### Specifications:

Name:	Anti-MCM2 (phospho Ser139) Antibody
Description:	Rabbit polyclonal antibody to MCM2 (phospho Ser139).
Applications:	WB
Recommended Dilutions:	WB: 1:500-1:1,000
Reactivity:	Human
Immunogen:	A synthetic phosphorylated peptide around S139 of human MCM2 (NP_004517.2).
Sequence:	YDSDE
Host:	Rabbit
Clonality:	Polyclonal
Isotype:	IgG
Conjugate:	Unconjugated
Purification:	Affinity purification.
Molecular Weight:	125 kDa
Product Form:	Liquid
Formulation:	Supplied in Phosphate Buffered Saline, pH 7.3, with 50% Glycerol and 0.01% Thiomersal.
Storage:	Shipped at 4°C. Upon delivery aliquot and store at -20°C. Avoid freeze / thaw cycles.
Disclaimer:	This product is for research use only. It is not intended for diagnostic or therapeutic use.

### Images:



Western blot analysis of extracts of HeLa cells, using Anti-MCM2 (phospho Ser139) Antibody (A309197) at 1:1,000 dilution. HeLa cells were treated by CIP(20uL/400ul) at 37°C for 1 hour. HeLa cells were treated by Serum-starvation overnight at 37°C. The secondary antibody was Goat Anti-Rabbit IgG H&L Antibody (HRP) at 1:10,000 dilution. Lysates/proteins were present at 25µg per lane. The blocking buffer used was 3% non-fat dry milk in TBST. Detection was with a ECL Basic Kit. Exposure time: 180s.