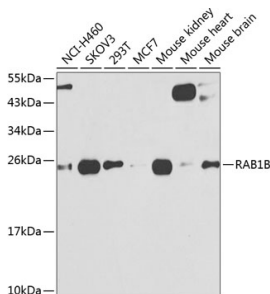


Anti-RAB1B Antibody (A309223)

Specifications:

Name:	Anti-RAB1B Antibody
Description:	Rabbit polyclonal antibody to RAB1B.
Applications:	WB, ICC/IF
Recommended Dilutions:	WB: 1:500-1:2,000, ICC/IF: 1:50-1:200
Reactivity:	Human, Mouse, Rat
Immunogen:	Recombinant fusion protein containing a sequence corresponding to amino acids 7-201 of human RAB1B (NP_112243.1).
Sequence:	YLFKLLLLIGDSGVGKSCLLLRFADDTYTESYISTIGVDFKIRTIELDGKTIKLIQWDT AGQERFRTITSSYYRGAHGIIVVYDVTQESYANVKQWLQEIDRYASENVNKLVLGNK SDLTTKKVVDNTTAKEFADSLGIPFLETSAKNATNVEQAFMTMAAEIKKRMGPGAASG GERPNLKIDSTPVKPAAGGGCC
Host:	Rabbit
Clonality:	Polyclonal
Isotype:	IgG
Conjugate:	Unconjugated
Purification:	Affinity purification.
Product Form:	Liquid
Formulation:	Supplied in Phosphate Buffered Saline, pH 7.3, with 50% Glycerol and 0.02% Sodium Azide.
Storage:	Shipped at 4°C. Upon delivery aliquot and store at -20°C. Avoid freeze / thaw cycles.
Disclaimer:	This product is for research use only. It is not intended for diagnostic or therapeutic use.

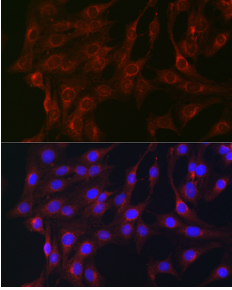
Images:



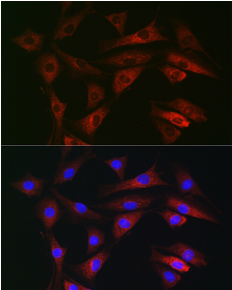
Western blot analysis of extracts of various cell lines, using Anti-RAB1B Antibody (A309223) at 1:1,000 dilution. The secondary antibody was Goat Anti-Rabbit IgG H&L Antibody (HRP) at 1:10,000 dilution. Lysates/proteins were present at 25µg per lane. The blocking buffer used was 3% non-fat dry milk in TBST. Detection was with a ECL Basic Kit. Exposure time: 90s.

Anti-RAB1B Antibody (A309223)

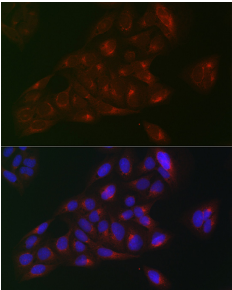
Images continued:



Immunofluorescence analysis of C6 cells using Anti-RAB1B Antibody (A309223) at a dilution of 1:100 (40x lens). DAPI was used to stain the cell nuclei (blue).



Immunofluorescence analysis of NIH-3T3 cells using Anti-RAB1B Antibody (A309223) at a dilution of 1:100 (40x lens). DAPI was used to stain the cell nuclei (blue).



Immunofluorescence analysis of U-2 OS cells using Anti-RAB1B Antibody (A309223) at a dilution of 1:100 (40x lens). DAPI was used to stain the cell nuclei (blue).