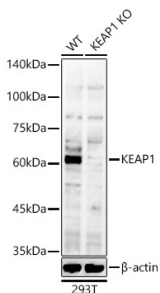


## Anti-Keap1 Antibody (A309232)

### Specifications:

Name:	Anti-Keap1 Antibody
Description:	Rabbit polyclonal antibody to Keap1.
Applications:	WB, ICC/IF
Recommended Dilutions:	WB: 1:500-1:1,000, ICC/IF: 1:50-1:200
Reactivity:	Human, Mouse, Rat
Immunogen:	A synthetic peptide corresponding to a sequence within amino acids 300-400 of human KEAP1 (NP_036421.2).
Sequence:	YLVKIFEELTLHKPTQVMPCRAPKVGRLIYTAGGYFRQSLSYLEAYNPSDGTWLRRLAD LQVPRSGLAGCVVGGLLYAVGGRNNSPDGNTDSSALDCYNPMT
Host:	Rabbit
Clonality:	Polyclonal
Isotype:	IgG
Conjugate:	Unconjugated
Purification:	Affinity purification.
Molecular Weight:	60 - 64 kDa
Product Form:	Liquid
Formulation:	Supplied in Phosphate Buffered Saline, pH 7.3, with 50% Glycerol and 0.05% Proclin 300.
Storage:	Shipped at 4°C. Upon delivery aliquot and store at -20°C. Avoid freeze / thaw cycles.
Disclaimer:	This product is for research use only. It is not intended for diagnostic or therapeutic use.

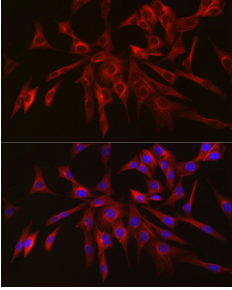
### Images:



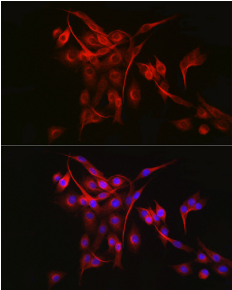
Western blot analysis of extracts from wild type (WT) and KEAP1 Rabbit polyclonal antibody knockout (KO) 293T cells, using Anti-Keap1 Antibody (A309232) at 1:1,000 dilution. The secondary antibody was Goat Anti-Rabbit IgG H&L Antibody (HRP) at 1:10,000 dilution. Lysates/proteins were present at 25µg per lane. The blocking buffer used was 3% non-fat dry milk in TBST. Detection was with a ECL Basic Kit. Exposure time: 60s.

## Anti-Keap1 Antibody (A309232)

Images continued:



Immunofluorescence analysis of NIH/3T3 cells using Anti-Keap1 Antibody (A309232) at a dilution of 1:100 (40x lens). DAPI was used to stain the cell nuclei (blue).



Immunofluorescence analysis of PC-12 cells using Anti-Keap1 Antibody (A309232) at a dilution of 1:100 (40x lens). DAPI was used to stain the cell nuclei (blue).