

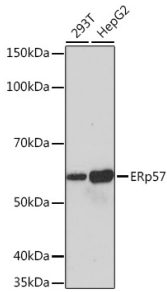
Anti-ERp57 Antibody [ARC0987] (A309243)

Specifications:

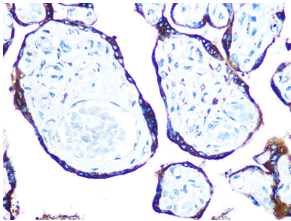
| | |
|------------------------|---|
| Name: | Anti-ERp57 Antibody [ARC0987] |
| Description: | Rabbit monoclonal [ARC0987] antibody to ERp57. |
| Applications: | WB, IHC |
| Recommended Dilutions: | WB: 1:500-1:2,000, IHC: 1:50-1:200 |
| Reactivity: | Human |
| Immunogen: | A synthetic peptide corresponding to a sequence within amino acids 100-200 of human ERp57 (P30101). |
| Sequence: | YPTLKIFRDGEEAGAYDGPRTADGIVSHLKKQAGPASVPLRTEEEFKKFISDKDASIV GFFDDSFSEAHSEFLKAASNLRDNYRFAHTNVESLVNEYDDNG |
| Host: | Rabbit |
| Clonality: | Monoclonal |
| Clone ID: | ARC0987 |
| Isotype: | IgG |
| Conjugate: | Unconjugated |
| Purification: | Affinity purification. |
| Molecular Weight: | 57 kDa |
| Product Form: | Liquid |
| Formulation: | Supplied in Phosphate Buffered Saline, pH 7.3, with 50% Glycerol, 0.05% BSA, and 0.02% Sodium Azide. |
| Storage: | Shipped at 4°C. Upon delivery aliquot and store at -20°C. Avoid freeze / thaw cycles. |
| Disclaimer: | This product is for research use only. It is not intended for diagnostic or therapeutic use. |

Anti-ERp57 Antibody [ARC0987] (A309243)

Images:



Western blot analysis of extracts of various cell lines, using Anti-ERp57 Antibody [ARC0987] (A309243) at 1:1,000 dilution. The secondary antibody was Goat Anti-Rabbit IgG H&L Antibody (HRP) at 1:10,000 dilution. Lysates/proteins were present at 25µg per lane. The blocking buffer used was 3% non-fat dry milk in TBST. Detection was with a ECL Basic Kit. Exposure time: 10s.



Immunohistochemistry analysis of paraffin-embedded human placenta using Anti-ERp57 Antibody [ARC0987] (A309243) at a dilution of 1:100 (40x lens). Perform microwave antigen retrieval with 10 mM PBS buffer pH 7.2 before commencing with IHC staining protocol.