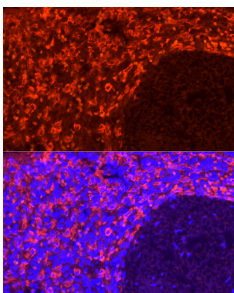


## Anti-CD163 Antibody [ARC58325] (A309302)

### Specifications:

Name:	Anti-CD163 Antibody [ARC58325]
Description:	Rabbit monoclonal [ARC58325] antibody to CD163.
Applications:	ICC/IF
Recommended Dilutions:	ICC/IF: 1:50-1:200
Reactivity:	Human
Immunogen:	Recombinant protein of human CD163.
Host:	Rabbit
Clonality:	Monoclonal
Clone ID:	ARC58325
Isotype:	IgG
Conjugate:	Unconjugated
Purification:	Affinity purification.
Product Form:	Liquid
Formulation:	Supplied in Phosphate Buffered Saline, pH 7.3, with 50% Glycerol, 0.05% BSA, and 0.05% Proclin 300.
Storage:	Shipped at 4°C. Upon delivery aliquot and store at -20°C. Avoid freeze / thaw cycles.
Disclaimer:	This product is for research use only. It is not intended for diagnostic or therapeutic use.

### Images:



Immunofluorescence analysis of human spleen cells using Anti-CD163 Antibody [ARC58325] (A309302) at a dilution of 1:200 (40x lens). DAPI was used to stain the cell nuclei (blue).