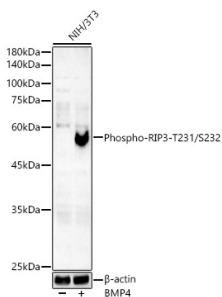


## Anti-SMAD5 (phospho Ser465) Antibody [ARC59204] (A309476)

### Specifications:

Name:	Anti-SMAD5 (phospho Ser465) Antibody [ARC59204]
Description:	Rabbit monoclonal [ARC59204] antibody to SMAD5 (phospho Ser465).
Applications:	WB
Recommended Dilutions:	WB: 1:1,000-1:5,000
Reactivity:	Mouse, Rat
Immunogen:	A synthetic phosphorylated peptide around S465 of human Smad5.
Host:	Rabbit
Clonality:	Monoclonal
Clone ID:	ARC59204
Isotype:	IgG
Conjugate:	Unconjugated
Purification:	Affinity purification.
Molecular Weight:	60 kDa
Product Form:	Liquid
Formulation:	Supplied in Phosphate Buffered Saline, pH 7.3, with 50% Glycerol, 0.05% BSA, and 0.05% Proclin 300.
Storage:	Shipped at 4°C. Upon delivery aliquot and store at -20°C. Avoid freeze / thaw cycles.
Disclaimer:	This product is for research use only. It is not intended for diagnostic or therapeutic use.

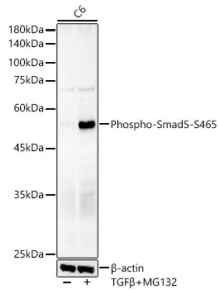
### Images:



Western blot analysis of NIH/3T3, using Anti-SMAD5 (phospho Ser465) Antibody [ARC59204] (A309476) at 1:2,000 dilution. NIH/3T3 cells were treated by BMP4(50ng/ml) at 37°C for 6 hours. The secondary antibody was Goat Anti-Rabbit IgG H&L Antibody (HRP) at 1:10,000 dilution. Lysates/proteins were present at 25µg per lane. The blocking buffer used was 3% non-fat dry milk in TBST. Detection was with a ECL Basic Kit. Exposure time: 180s.

## Anti-SMAD5 (phospho Ser465) Antibody [ARC59204] (A309476)

Images continued:



Western blot analysis of C6, using Anti-SMAD5 (phospho Ser465) Antibody [ARC59204] (A309476) at 1:2,000 dilution. C6 cells were treated by MG132(50  $\mu$ M) and TGFbeta at 37°C for 90 minutes. The secondary antibody was Goat Anti-Rabbit IgG H&L Antibody (HRP) at 1:10,000 dilution. Lysates/proteins were present at 25 $\mu$ g per lane. The blocking buffer used was 3% non-fat dry milk in TBST. Detection was with a ECL Basic Kit. Exposure time: 180s.