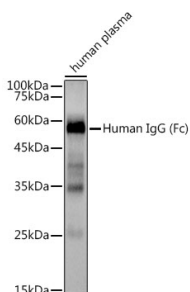


Anti-Human IgG Antibody [ARC2241] (A309722)

Specifications:

Name:	Anti-Human IgG Antibody [ARC2241]
Description:	Rabbit monoclonal [ARC2241] antibody to Human IgG.
Applications:	WB, IHC
Recommended Dilutions:	WB: 1:1,000-1:5,000, IHC: 1:100-1:500
Reactivity:	Human
Immunogen:	Human IgG.
Host:	Rabbit
Clonality:	Monoclonal
Clone ID:	ARC2241
Isotype:	IgG
Conjugate:	Unconjugated
Purification:	Affinity purification.
Molecular Weight:	50 kDa
Product Form:	Liquid
Formulation:	Supplied in Phosphate Buffered Saline, pH 7.3, with 50% Glycerol, 0.05% BSA, and 0.02% Sodium Azide.
Storage:	Shipped at 4°C. Upon delivery aliquot and store at -20°C. Avoid freeze / thaw cycles.
Disclaimer:	This product is for research use only. It is not intended for diagnostic or therapeutic use.

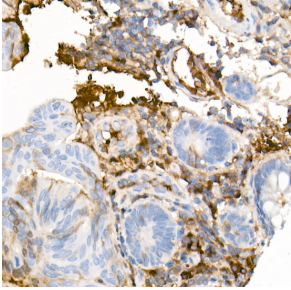
Images:



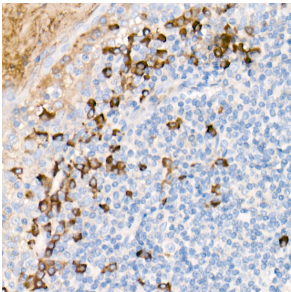
Western blot analysis of extracts of Human plasma, using Anti-Human IgG Antibody [ARC2241] (A309722) at 1:3,000 dilution. The secondary antibody was Goat Anti-Rabbit IgG H&L Antibody (HRP) at 1:10,000 dilution. Lysates/proteins were present at 25µg per lane. The blocking buffer used was 3% non-fat dry milk in TBST. Detection was with a ECL Basic Kit. Exposure time: 1s.

Anti-Human IgG Antibody [ARC2241] (A309722)

Images continued:



Immunohistochemistry analysis of paraffin-embedded human colon carcinoma tissue using Anti-Human IgG Antibody [ARC2241] (A309722) at a dilution of 1:300 (40x lens). Perform high pressure antigen retrieval with 10 mM citrate buffer pH 6.0 before commencing with IHC staining protocol.



Immunohistochemistry analysis of paraffin-embedded human tonsil using Anti-Human IgG Antibody [ARC2241] (A309722) at a dilution of 1:300 (40x lens). Perform high pressure antigen retrieval with 10 mM citrate buffer pH 6.0 before commencing with IHC staining protocol.