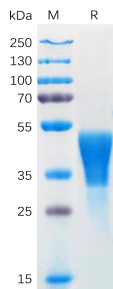


## Recombinant Human M-CSF Protein (6xHis Tag) (A318169)

### Specifications:

Name:	Recombinant Human M-CSF Protein (6xHis Tag)
Applications:	ELISA, SDS-PAGE
Expression System:	HEK293 cells
Nature:	Recombinant
Protein Species:	Human
Protein Length:	Protein fragment.
Sequence:	M-CSF(Glu33-Arg255)+6xHisTag
Tag:	C-terminal 6xHis Tag
Molecular Weight:	The protein has a predicted molecular mass of 26 kDa after removal of the signal peptide. The apparent molecular mass of M-CSF-His is approximately 25-55 kDa due to glycosylation.
Conjugate:	Unconjugated
Purity:	> 95%, by SDS-PAGE and Coomassie blue staining.
Product Form:	Lyophilized
Concentration:	Reconstitution dependent.
Formulation:	Lyophilized from sterile Phosphate Buffered Saline, pH 7.4. Normally 5%-8% Trehalose is added as a protectant before lyophilization.
Storage:	Shipped at 4°C. Lyophilized: Store at -20°C to -80°C. Reconstituted: Aliquot and store at -80°C. Product is stable for one year. Avoid freeze/thaw cycles.
Disclaimer:	This product is for research use only. It is not intended for diagnostic or therapeutic use.

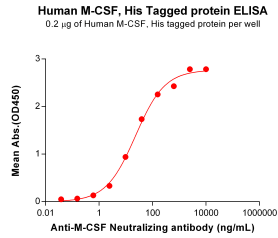
### Images:



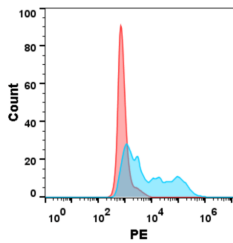
SDS-PAGE of Recombinant Human M-CSF Protein (6xHis Tag) (A318169) under reducing conditions.

## Recombinant Human M-CSF Protein (6xHis Tag) (A318169)

Images continued:



ELISA plates were pre-coated with Recombinant Human M-CSF Protein (6×His Tag) (A318169) at 2 µg/ml (100 µl/well) which can bind Lacnotuzumab Biosimilar - Anti-M-CSF Antibody - BSA and Azide free (A318861) in a linear range of 2.44-156.25 ng/ml.



Flow cytometry analysis of 1 µg/ml of Recombinant Human M-CSF Protein (6×His Tag) (A318169) on Expi293 cells transfected with human CSF1R (Blue histogram) or Expi293 transfected with irrelevant protein (Red histogram).