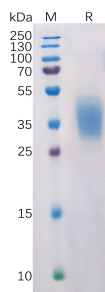


## Recombinant Human PD-L2 Protein (6xHis Tag) (A318218)

### Specifications:

Name:	Recombinant Human PD-L2 Protein (6xHis Tag)
Applications:	SDS-PAGE, Flow Cytometry
Expression System:	HEK293 cells
Nature:	Recombinant
Protein Species:	Human
Protein Length:	Protein fragment.
Sequence:	PDL2(Leu20-Pro219)+6xHisTag
Tag:	C-terminal 6xHis Tag
Molecular Weight:	The protein has a predicted molecular mass of 23.4 kDa after removal of the signal peptide. The apparent molecular mass of PDL2-His is approximately 35-55 kDa due to glycosylation.
Conjugate:	Unconjugated
Purity:	> 95%, by SDS-PAGE and Coomassie blue staining.
Product Form:	Lyophilized
Concentration:	Reconstitution dependent.
Formulation:	Lyophilized from sterile Phosphate Buffered Saline, pH 7.4. Normally 5%-8% Trehalose is added as a protectant before lyophilization.
Storage:	Shipped at 4°C. Lyophilized: Store at -20°C to -80°C. Reconstituted: Aliquot and store at -80°C. Product is stable for one year. Avoid freeze/thaw cycles.
Disclaimer:	This product is for research use only. It is not intended for diagnostic or therapeutic use.

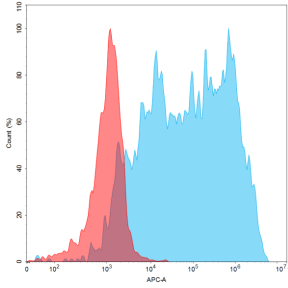
### Images:



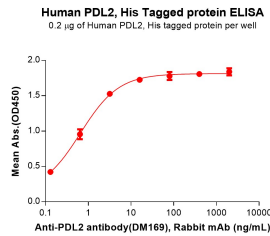
SDS-PAGE of Recombinant Human PD-L2 Protein (6xHis Tag) (A318218) under reducing conditions.

## Recombinant Human PD-L2 Protein (6xHis Tag) (A318218)

Images continued:



Flow cytometry analysis of 15µg/ml of Recombinant Human PD-L2 Protein (6×His Tag) (A318218) on Expi293 cells transfected with human PD1 (Blue histogram) or Expi293 transfected with irrelevant protein (Red histogram).



ELISA plates were pre-coated with Recombinant Human PD-L2 Protein (6×His Tag) (A318218) at 2 µg/ml (100 µl/well) which can bind Anti-PD-L2 Antibody [DM169] - BSA and Azide free (A318540) in a linear range of 0.13-3.20 ng/ml.