

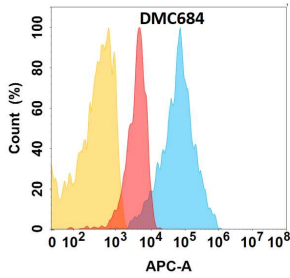
Anti-IGF1 Receptor Antibody [DMC684] - BSA and Azide free (A318684)

Specifications:

Name:	Anti-IGF1 Receptor Antibody [DMC684] - BSA and Azide free
Description:	Recombinant chimeric monoclonal [DMC684] antibody to IGF1 Receptor.
Applications:	Flow Cytometry
Recommended Dilutions:	Flow Cytometry: 1:100
Reactivity:	Human
Host:	Rabbit / Human
Clonality:	Monoclonal
Clone ID:	DMC684
Isotype:	IgG1
Conjugate:	Unconjugated
Purification:	Affinity chromatography.
Concentration:	Reconstitution dependent.
Product Form:	Lyophilized
Reconstitution:	Prior to reconstitution, centrifuge the vial at 5,000g for 3-5 minutes at room temperature. Reconstitute with appropriate volume of distilled sterile water to bring product to 1mg/ml concentration. After addition of distilled sterile water, mix by gentle tapping. Note: It is not recommended to vortex or vigorously pipette the sample.
Formulation:	Lyophilized from sterile Phosphate Buffered Saline, pH 7.4. Normally 5%-8% Trehalose is added as a protectant before lyophilization.
Storage:	Shipped at 4°C. Lyophilized: Store at -20°C to -80°C. Reconstituted: Aliquot and store at -80°C. Product is stable for one year. Avoid freeze/thaw cycles.
General Notes:	This antibody is a recombinant rabbit chimeric monoclonal antibody containing human IgG1 Fc.
Disclaimer:	This product is for research use only. It is not intended for diagnostic or therapeutic use.

Anti-IGF1 Receptor Antibody [DMC684] - BSA and Azide free (A318684)

Images:



IGF1R protein is highly expressed on the surface of Expi293 cell membrane. Flow cytometry analysis with Anti-IGF1 Receptor Chimeric Antibody [DMC684] - Azide free (A318684) on Expi293 cells transfected with human IGF1R (blue histogram) or Expi293 transfected with irrelevant protein (red histogram), and isotype control on Expi293 transfected with irrelevant protein (orange histogram).