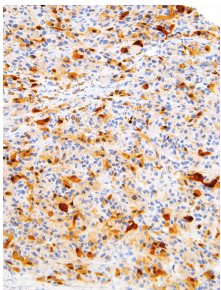


Anti-S100 alpha Antibody [IHC100] (A324381)

Specifications:

Name:	Anti-S100 alpha Antibody [IHC100]
Description:	Mouse monoclonal [IHC100] antibody to S100 alpha.
Applications:	IHC-P
Positive Control:	Melanoma
Recommended Dilutions:	IHC-P: 1:100-1:400
Reactivity:	Human
Host:	Mouse
Clonality:	Monoclonal
Clone ID:	IHC100
Isotype:	IgG2b
Light Chains:	kappa
Conjugate:	Unconjugated
Concentration:	Lot Specific
Product Form:	Liquid
Formulation:	Supplied in Tris Buffered Saline, pH 7.3-7.7, with 1% BSA and < 0.1% Sodium Azide.
Storage:	Shipped at 4°C. Store at 4°C.
Disclaimer:	This product is for research use only. It is not intended for diagnostic or therapeutic use.

Images:



Immunohistochemical analysis of formalin-fixed, paraffin-embedded human melanoma tissue using Anti-S100 alpha Antibody [IHC100] (A324381).