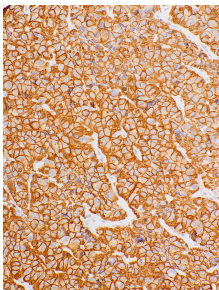


## Anti-Growth Hormone Antibody [IHC589] (A324467)

### Specifications:

Name:	Anti-Growth Hormone Antibody [IHC589]
Description:	Mouse monoclonal [IHC589] antibody to Growth Hormone.
Applications:	IHC-P
Positive Control:	Pituitary
Recommended Dilutions:	IHC-P: 1:100-1:400
Reactivity:	Human
Host:	Mouse
Clonality:	Monoclonal
Clone ID:	IHC589
Isotype:	IgG1
Light Chains:	kappa
Conjugate:	Unconjugated
Concentration:	Lot Specific
Product Form:	Liquid
Formulation:	Supplied in Tris Buffered Saline, pH 7.3-7.7, with 1% BSA and < 0.1% Sodium Azide.
Storage:	Shipped at 4°C. Store at 4°C.
Disclaimer:	This product is for research use only. It is not intended for diagnostic or therapeutic use.

### Images:



Immunohistochemical analysis of formalin-fixed, paraffin-embedded human pituitary gland tissue using Anti-Growth Hormone Antibody [IHC589] (A324467).