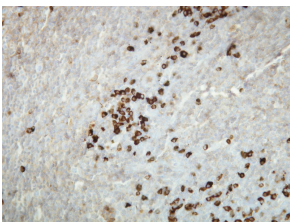


Anti-Human Kappa Light Chain Antibody [A21-Y] (A8191)

Specifications:

Name:	Anti-Human Kappa Light Chain Antibody [A21-Y]
Description:	Rabbit monoclonal (A21-Y) antibody to Human Kappa Light Chain.
Specificity:	This antibody recognizes the epitope between Gln47 - Ser63.
Applications:	IHC-P, IHC-Fr
Recommended Dilutions:	IHC: 1:100-1:500.
Reactivity:	Human
Immunogen:	Peptide derived from N-terminal sequence of human kappa light chain IgG.
Host:	Rabbit
Clonality:	Monoclonal
Clone ID:	A21-Y
Isotype:	IgG
Conjugate:	Unconjugated
Product Form:	Liquid
Formulation:	Supplied in Tris Buffered Saline, pH 8.0, with 20 mg/ml BSA and 0.05% Sodium Azide.
Storage:	Store at 4°C.
Disclaimer:	This product is for research use only. It is not intended for diagnostic or therapeutic use.

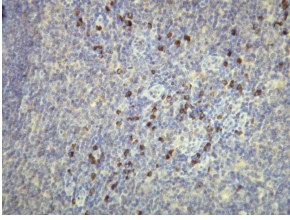
Images:



Expression of the Kappa Light Chain immunoglobulin in the plasma cells of the palatine tonsil. Formalin fixed, paraffin embedded human tissues (4µm sections) stained with Anti-Human Kappa light chain Antibody (A8191).

Anti-Human Kappa Light Chain Antibody [A21-Y] (A8191)

Images continued:



Expression of the Kappa Light Chain immunoglobulin in the plasma cells of the palatine tonsil. Formalin fixed, paraffin embedded human tissues (4 μ m sections) stained with Anti-Human Kappa light chain Antibody (A8191).